



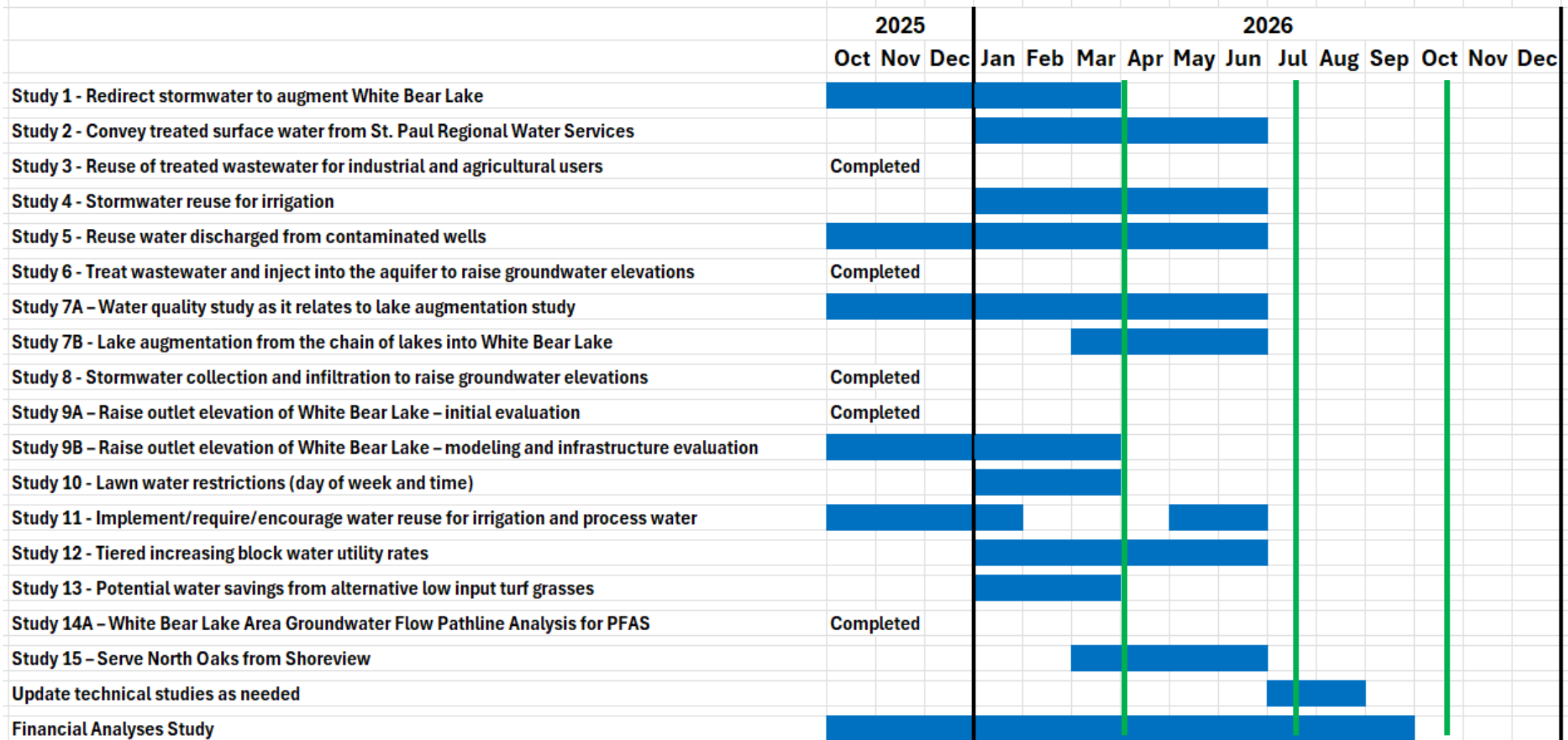
Project schedule and summaries



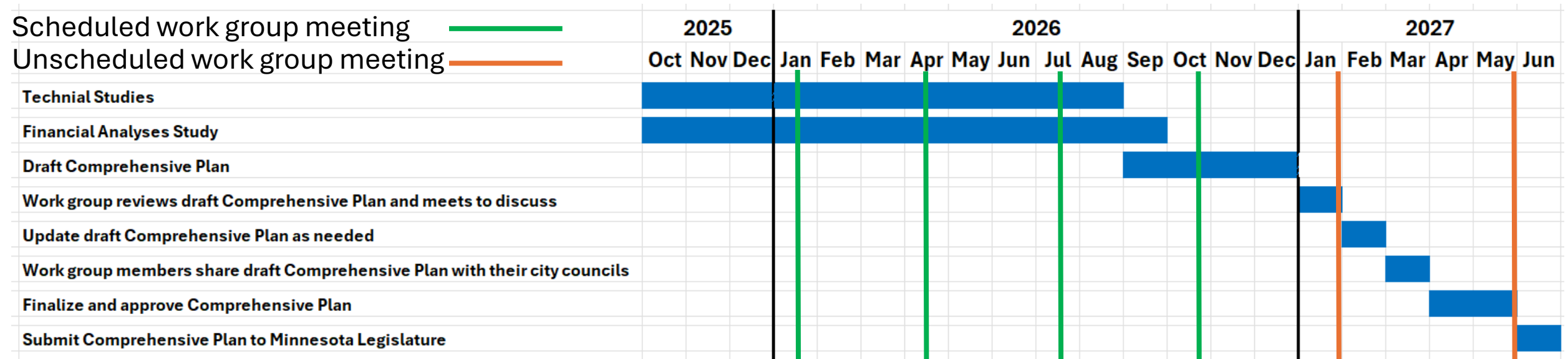
Greg Johnson | April 2, 2026 | metro council.org

Project schedule (1/2)

Scheduled work group meeting 



Project schedule (2/2)



Metropolitan Council

Project summaries

Study Summaries White Bear Lake Area Comprehensive Plan

Study	Status	Description	Amount of water saved	Estimated cost
Study 1 – Redirect stormwater to augment White Bear Lake	In Progress	<p>Study 1 by Kimley-Horn explores redirecting water that is collected in nearby stormwater ponds to augment White Bear Lake.</p> <p>April 2025 Update: Work group members collectively agreed they do not want to move forward with studying this method further due to its lack of effectiveness. Instead, they proposed to evaluate pumping reuse water from Bald Eagle Lake, Ramsey/Washington Counties Ditch 1, Centerville Lake, and areas of Grant that are known to have excess surface water.</p> <p>July 2025 Update: Met Council presented a proposal to amend Study 1 to evaluate additional surface water sources for augmentation. The amended Study 1 includes evaluating pumping surface water from Bald Eagle Lake, Ramsey/Washington Counties Ditch 1, Centerville Lake, and areas of Grant that are known to have excess surface water. Amended Study 1 will be presented at the April 2, 2026 work group meeting.</p>	Not applicable for Study 1 since base evaluation was determined not feasible. To be determined for Amended for Study 1.	Not applicable for Study 1 since base evaluation was determined not feasible. To be determined for Amended for Study 1.
Study 2 – Convey treated surface water from St. Paul Regional Water Services	In Progress	Study 2 by SEH evaluates conveying treated surface water from either St. Paul Regional Water Services or a new regional surface water treatment plant to select White Bear Lake area communities in the north and east metro area. The results of this study will be presented at the July 16, 2026 work group meeting.	To be determined	To be determined
Study 3 – Reuse of treated wastewater for industrial and agricultural users	Completed	<p>Study 3 by SEH evaluated reusing treated wastewater from nearby Met Council interceptors for industrial and agricultural users in the White Bear Lake area.</p> <p>July 2025 Update: Due to the very minimal estimated improvement to White Bear Lake water levels (less than 0.1 feet), the work group members collectively agreed to not move forward with further studying this method and to use the project funds for other studies for now but can come back to it later.</p>	123.3 million gallons per year	<p>Capital cost - \$296,000,000</p> <p>Annual O&M cost - \$1,350,000</p>
Study 4 – Stormwater reuse for irrigation	In Progress	Study 4 by Barr Engineering will evaluate using stormwater reuse for irrigation to reduce groundwater pumping from the acquired. The results of this study will be presented at the July 16, 2026 work group meeting.	To be determined	To be determined