

George Floyd Square Project Update

June 8, 2026 Metropolitan Council Transportation Committee

Fontaine Burress, City of Minneapolis Public Works

Kyle O'Donnell Burrows, Metro Transit

Community Engagement Framework

Community Values

identify foundational values for GFS

Peoples' Way

identify a community-centered owner and use

Memorials

define the goal and locations for future memorials and the City's role

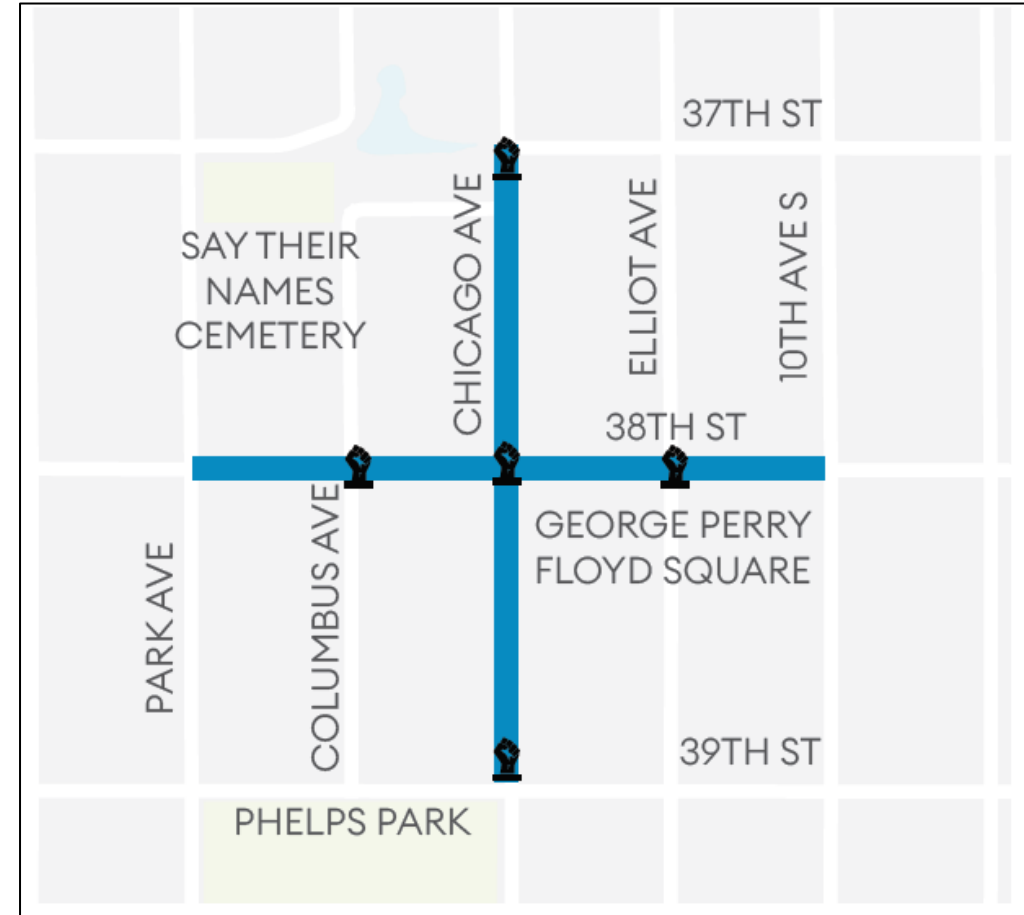
Streets

Design a concept layout for the public ROW infrastructure



Street Project Scope

- Redesign and reconstruction of 38th Street and Chicago Avenue
 - Streets built between 1957 and 1963
 - Infrastructure has exceeded its useful life
 - Streets no longer meet users' needs



38th & Chicago Re-Envisioned project history

2018

- 38th Street and Chicago Avenue reconstruction included in city Capital Improvement Program

2019

- Thirty-Eighth Street THRIVE Strategic plan kicked off

2020

- 5/25 George Perry Floyd murdered
- Intersection closed to vehicles for community gathering

2021

- The 38th Street THRIVE Strategic Development Plan completed and adopted
- Street reopened through phased reconnection of 38th & Chicago (led by Agape)
- Rise & Remember (formerly the George Floyd Global Memorial) began preservation of the living memorial

2022

- Learning table sessions

2023

- Community engagement framework developed for George Perry Floyd Square
- City purchase of the Peoples' Way property

2024

- 38th & Chicago Re-Envisioned engagement
- 11/12 Committee of the Whole: Visioning and Priorities Report Update received and filed

2025

- 2/27 City Council: Pedestrian Plaza Study Legislative Directive adopted
- Community engagement for Pedestrian Plaza Study Legislative Directive
- 12/4 C&I Committee: Legislative Directive Presentation
- 12/11 City Council: Approval of "Flexible-Open" Concept Layout and resolution supporting advancement of CVC priorities

2026

- Community engagement on layout resolution elements, assessments, and construction
- Construction start

“Consider the people who live here and move through the space daily, as well as the international visitors are youth. Consider their experiences and grief.”

– Visioning Workshop 2

“Transit service along Chicago is vital for residents. Visitors, and businesses.”

– Visioning workshop 4

“Pedestrian safety is paramount in any improvements to the Square.”

– Visioning Workshop 2

“Memorialize the murder, the response and the movement.”

– Visioning Workshop 1

1,000+ attendees at engagement events!

1,600+ comments from engagement!



700
Post Cards
and Door
Hangers



320
Door Knocks
Residents and
Businesses



18
GovDelivery
Emails
(12,880 recipients)



9,827
Online
Impressions
(Total number
of website
visitors)

25,000+ total interactions!

“This is a living memorial and will change over time – plans need to accommodate that change”
– Visioning Workshop 3

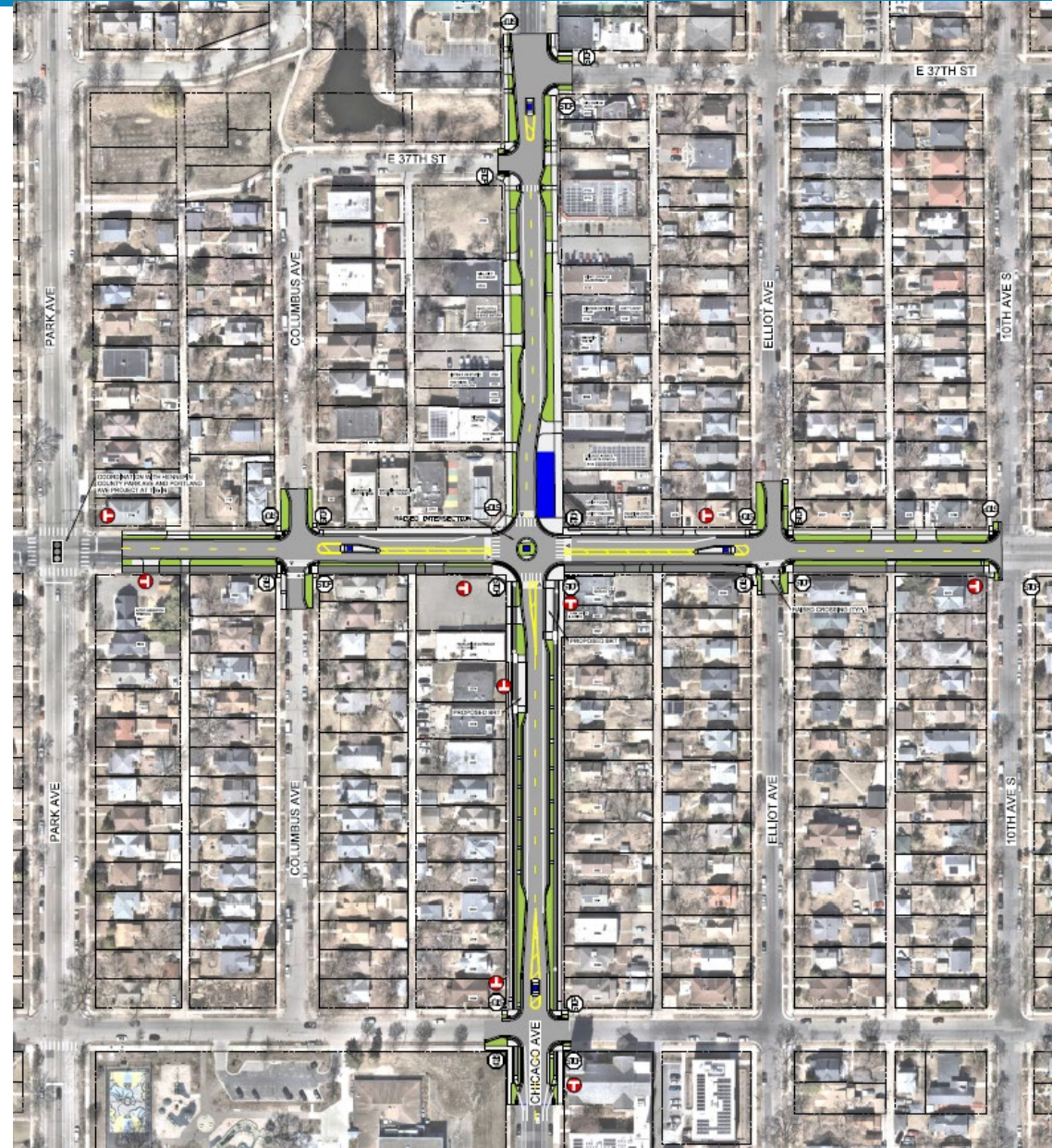
“Why a museum? It needs to be something more. It should be a place where people come for resources and help.” – Youth Focus Group

“Embed racial healing on individual, social, and systemic levels, aligning with the GFS vision.”
– Visioning Workshop 5

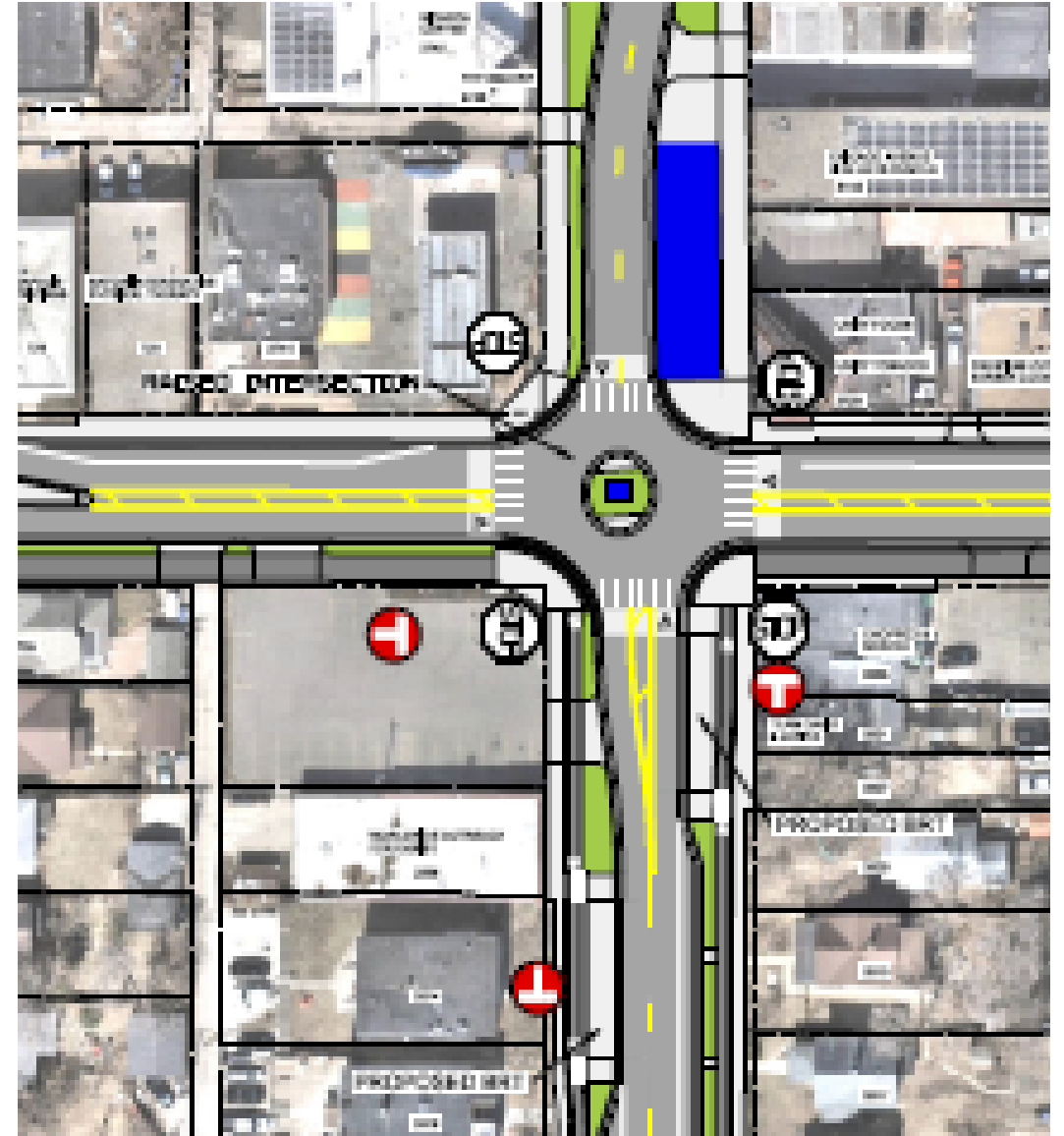
“The square provides a sense of community, so all the design should seek to support that”
– Visioning Workshop 3

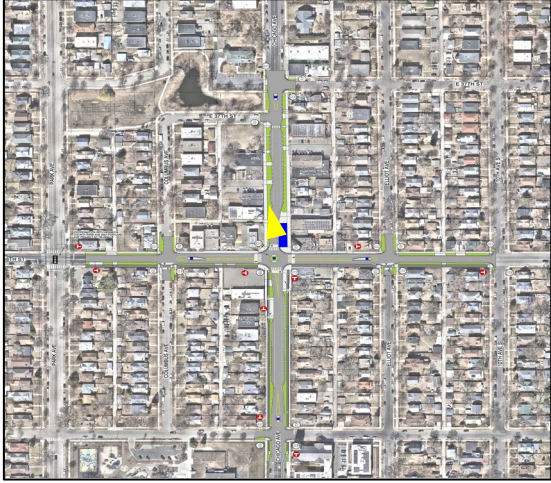
City Council (12/11/2025)

- Concept Layout Approval for the Flexible Open layout
- Resolution supporting advancement of the Community Visioning Council priorities at George Floyd Square



- Open / Flexible Concept:
 - Returns buses to north-south routing through intersection via Chicago Avenue
 - D Line platforms on south leg of intersection included in approved layout

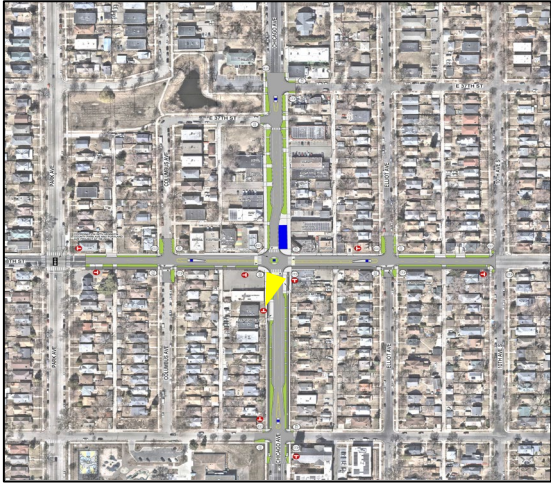




38th & Chicago

View south towards George Floyd Square





38th & Chicago

View north towards George Floyd Square



People's Way site

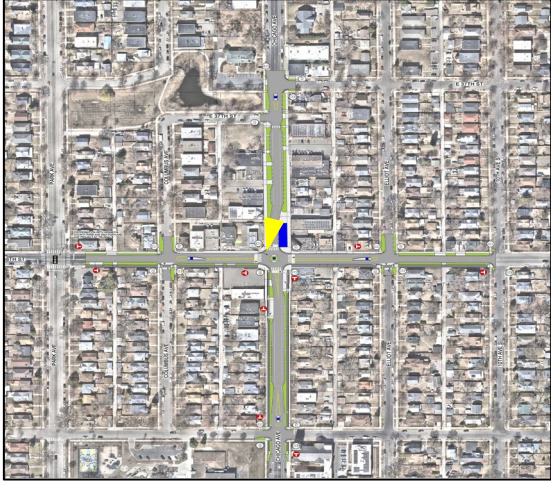
Preserve space for memorial

Raised intersection

D Line bus rapid transit stop

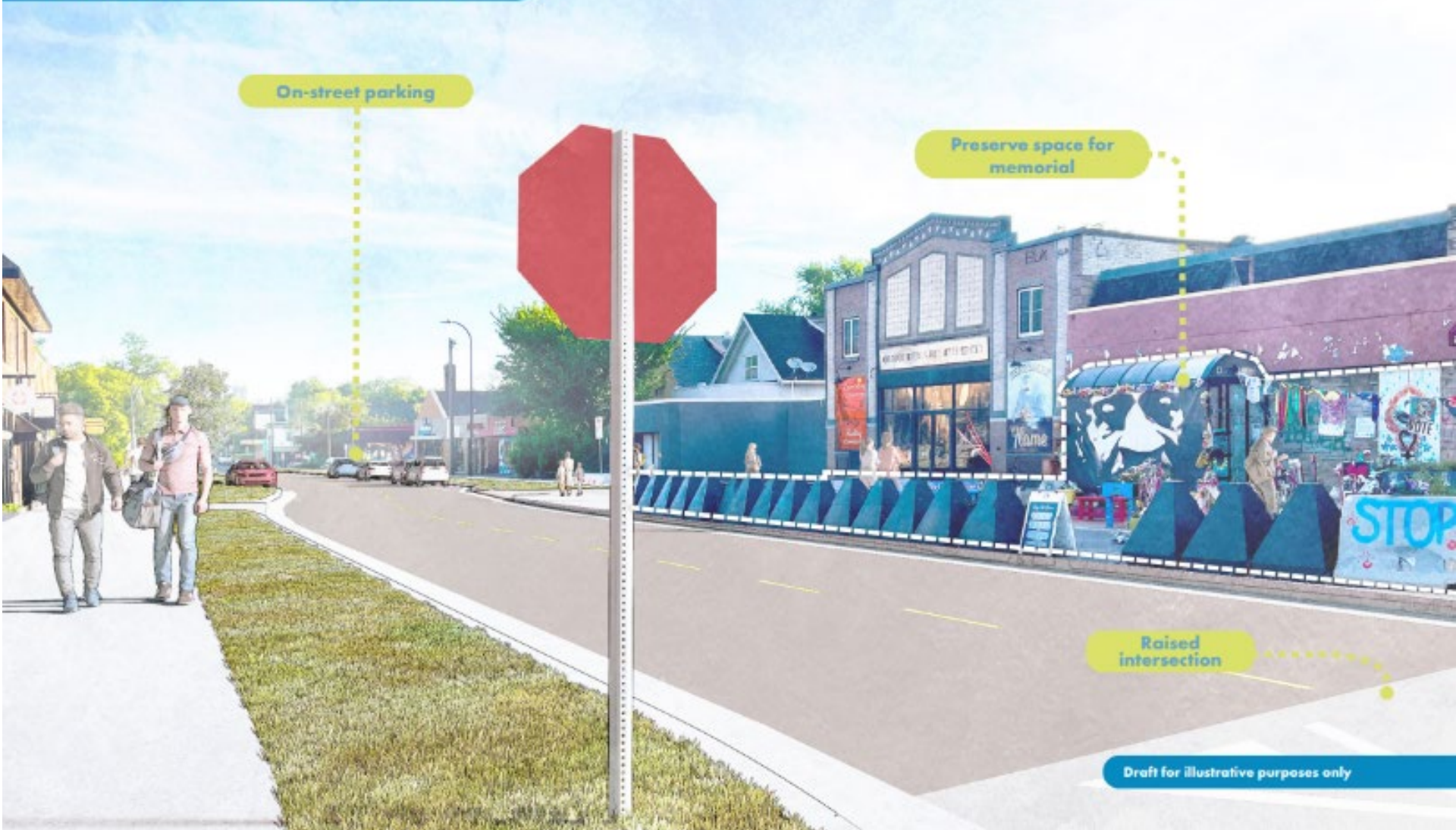
Bikeway

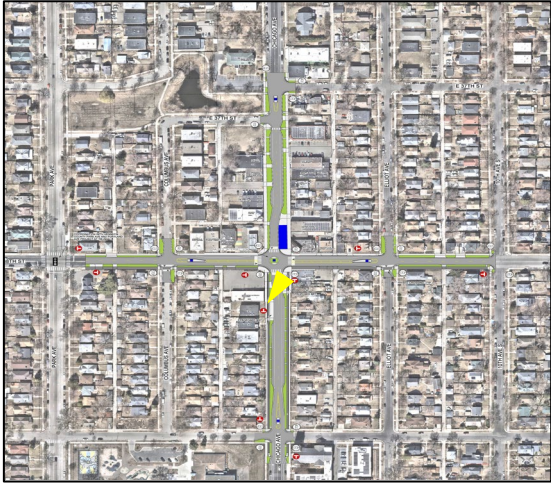
Draft for illustrative purposes only



38th & Chicago

View north adjacent to George Floyd Square



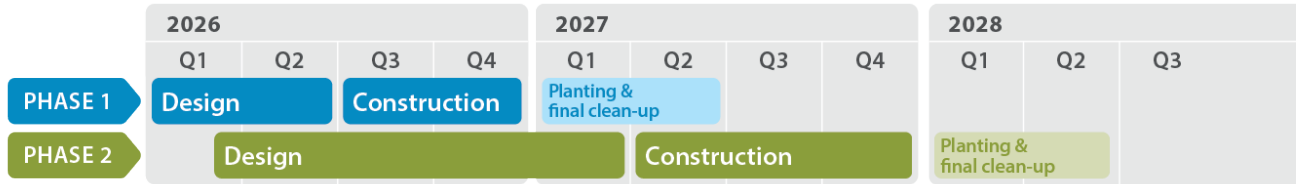


38th & Chicago

View east, south of George Floyd Square



Construction Timeline + Phasing

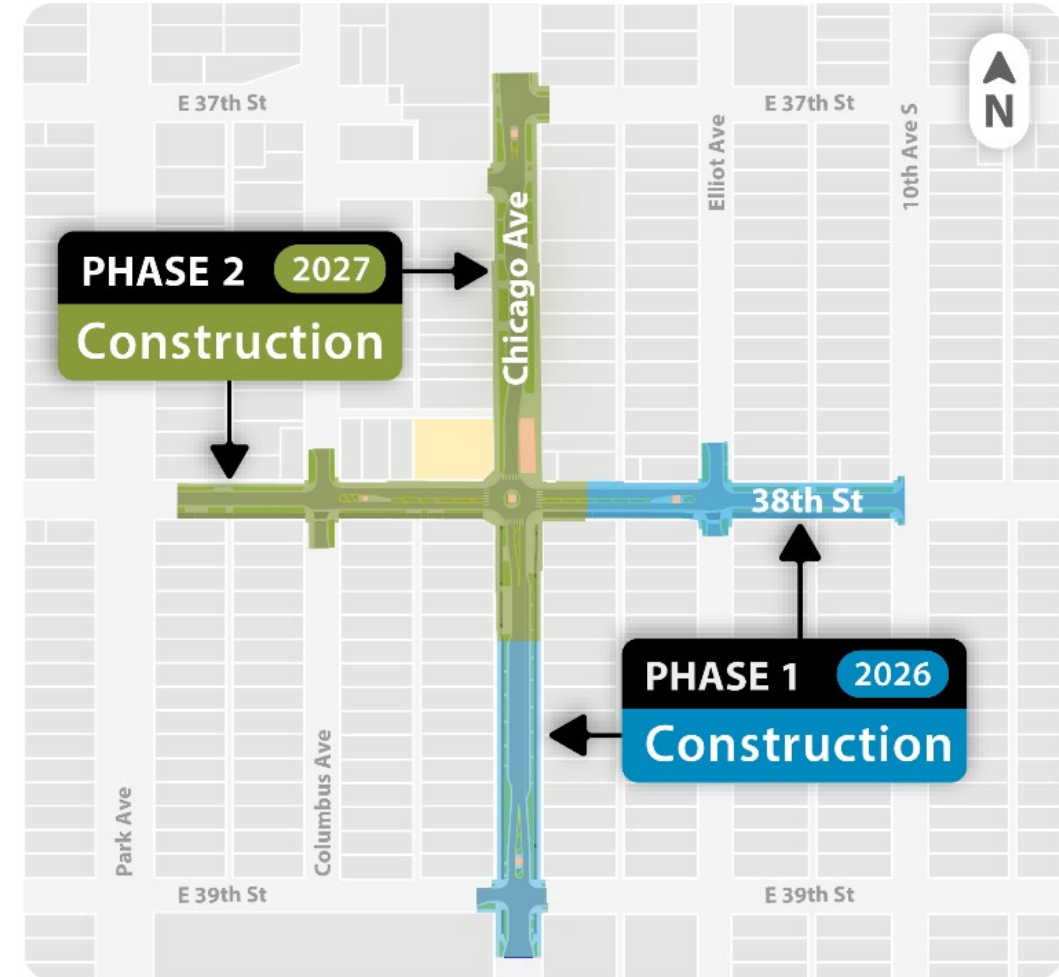


Phase 1

- 38th St between Chicago Ave and 10th Ave
- Chicago Ave between 39th St and 38th St (south of the BRT stations)

Phase 2

- 38th St between Park Ave and Chicago Ave (including intersection)
- Chicago Ave between 38th St and 37th St (including BRT stations)



Map Legend

George Floyd Memorial

Peoples' Way

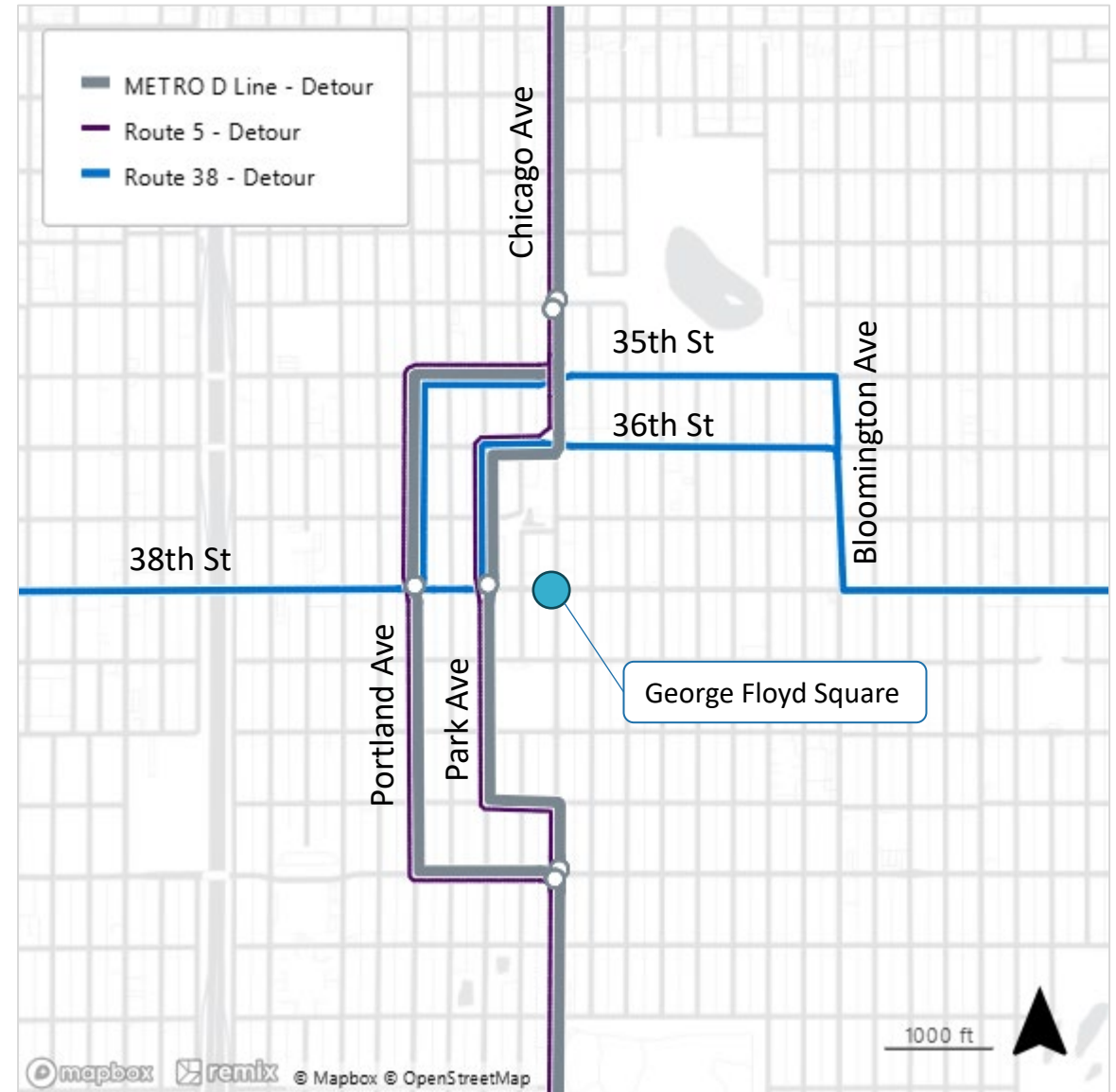
Phase 1 closures

Roadway closures will include:

- 38th Street E, from 10th Avenue S to Elliot Avenue
- Chicago Avenue, from 39th Street to south of 38th Street

Transit detour

- METRO D Line and Route 5 remain on Park / Portland
 - Shift from 39th Street to 41st Street
- Route 38 shift to 35th / 36th Street from Bloomington to Park / Portland



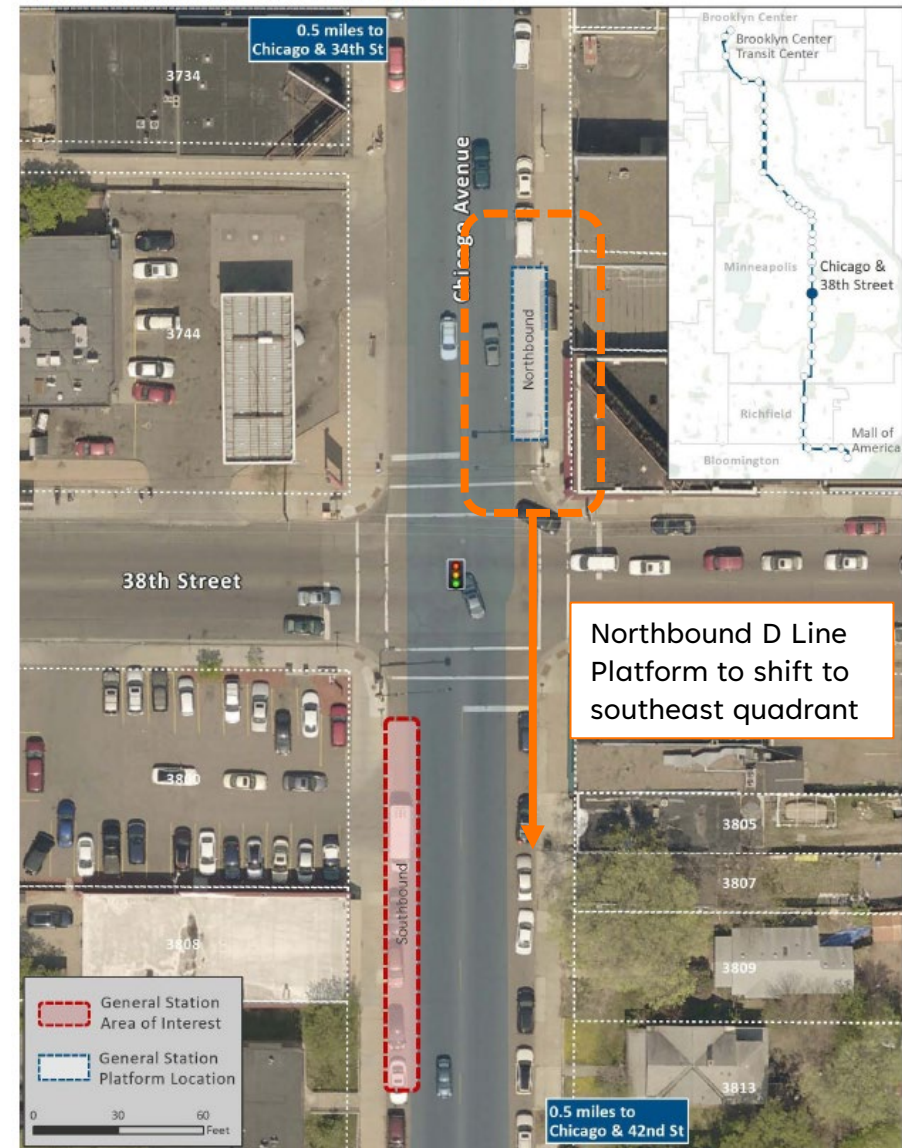
- D Line Station Plan approved by the Metropolitan Council in July 2018
 - Identified a D Line platform on the northeast quadrant of the intersection of Chicago & 38th Street
 - Following the murder of George Floyd, station at this intersection was not advanced
 - Temporary stations installed at Park and Portland
- Amendment to D Line Station Plan to align with approved layout, locate D Line platforms on south quadrants of intersection
 - Transportation Committee June 22
 - Metropolitan Council July 8



METRO D Line Station Plan Amendment

- D Line Station Plan approved by the Metropolitan Council in July 2018
 - Identified a D Line platform on the northeast quadrant of the intersection of Chicago & 38th Street
 - Following the murder of George Floyd, station at this intersection was not advanced
 - Temporary stations installed at Park and Portland
- Amendment to D Line Station Plan to align with approved layout, locate D Line platforms on south quadrants of intersection
 - Transportation Committee June 22
 - Metropolitan Council July 8

Figure 45: Recommended station location – Chicago & 38th Street



July 2018 D Line Station Plan, to be updated