

Rice Creek North Regional Trail, Anoka County

Business Item 2026-29

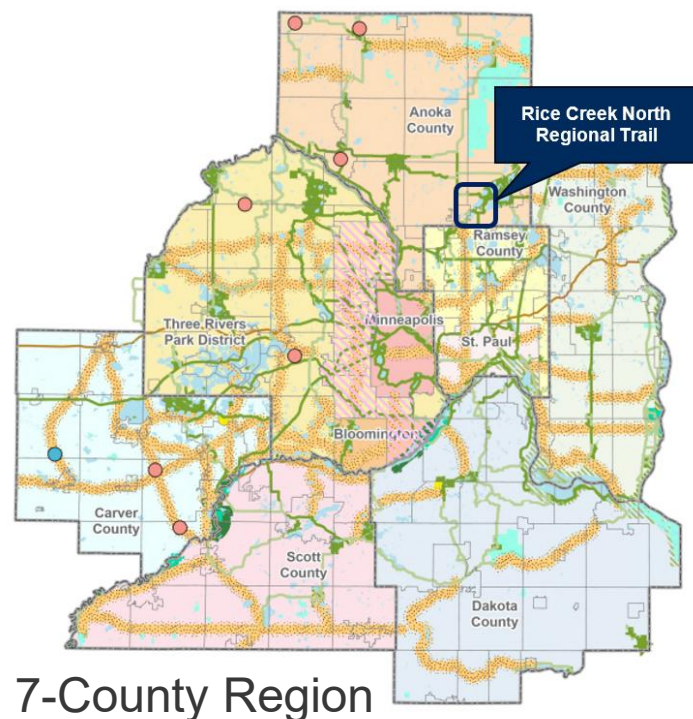
Metropolitan Parks and Open Space Commission



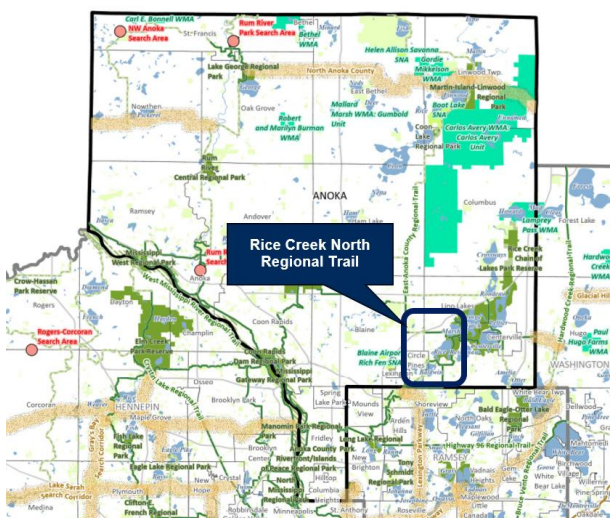
February 5, 2026

Zoey Mauck, Senior Planner

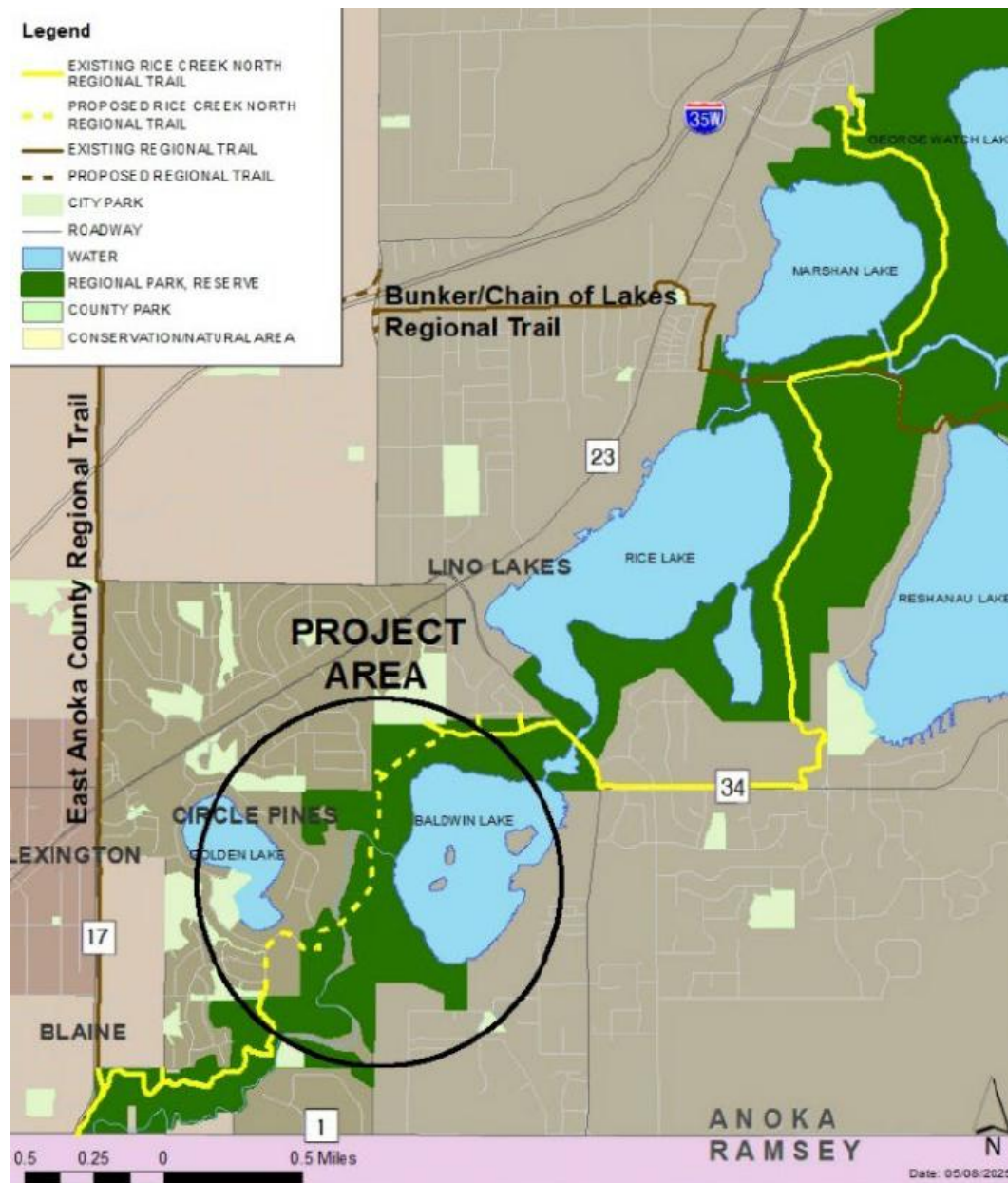
Rice Creek North Regional Trail



7-County Region



Anoka County



Rice Creek North Regional Trail

Equity Analysis

Project Data

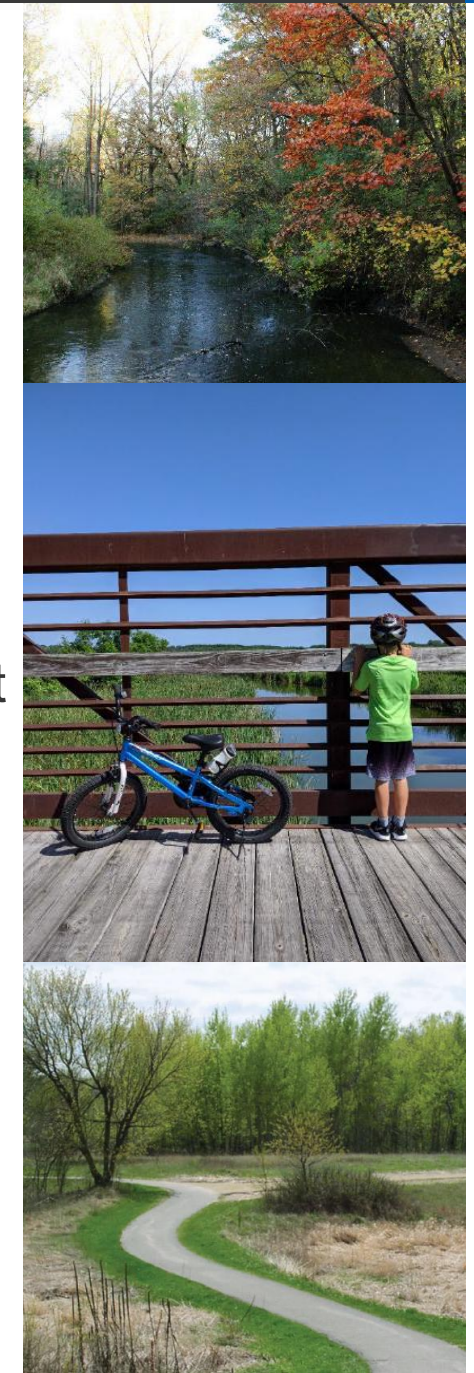
- Anoka County identified priority populations along the corridor:
 - People of color
 - Those under age 25
 - Those over age of 65
 - People with disabilities (both ambulatory and other)
- These groups are often not heavily included in public engagement. They also face access barriers to trails due to poor connections, feeling unwelcome or unsafe, a lack of cultural accommodations, language barriers, cost, and a lack of awareness.

Public Engagement

- Anoka County provided online information, surveys, and in-person listening sessions
- Themes included:
 - Add amenities along the trail
 - Improve safety through lighting, signage, online map availability
 - Concern about environmental impact
 - Different preferred route, but limitations are understood

Evaluation Summary

- Feedback received shaped the final plan.
- Future engagement efforts will be needed as new segment is implemented



Public and Partner Engagement



Public Engagement

- Listening sessions, project website “Plan Your Parks”, social media updates, online surveys
- Workshops with teens that are part of Centennial High School’s Students for Change Group
- Some engagement strategies limited by COVID-19 pandemic

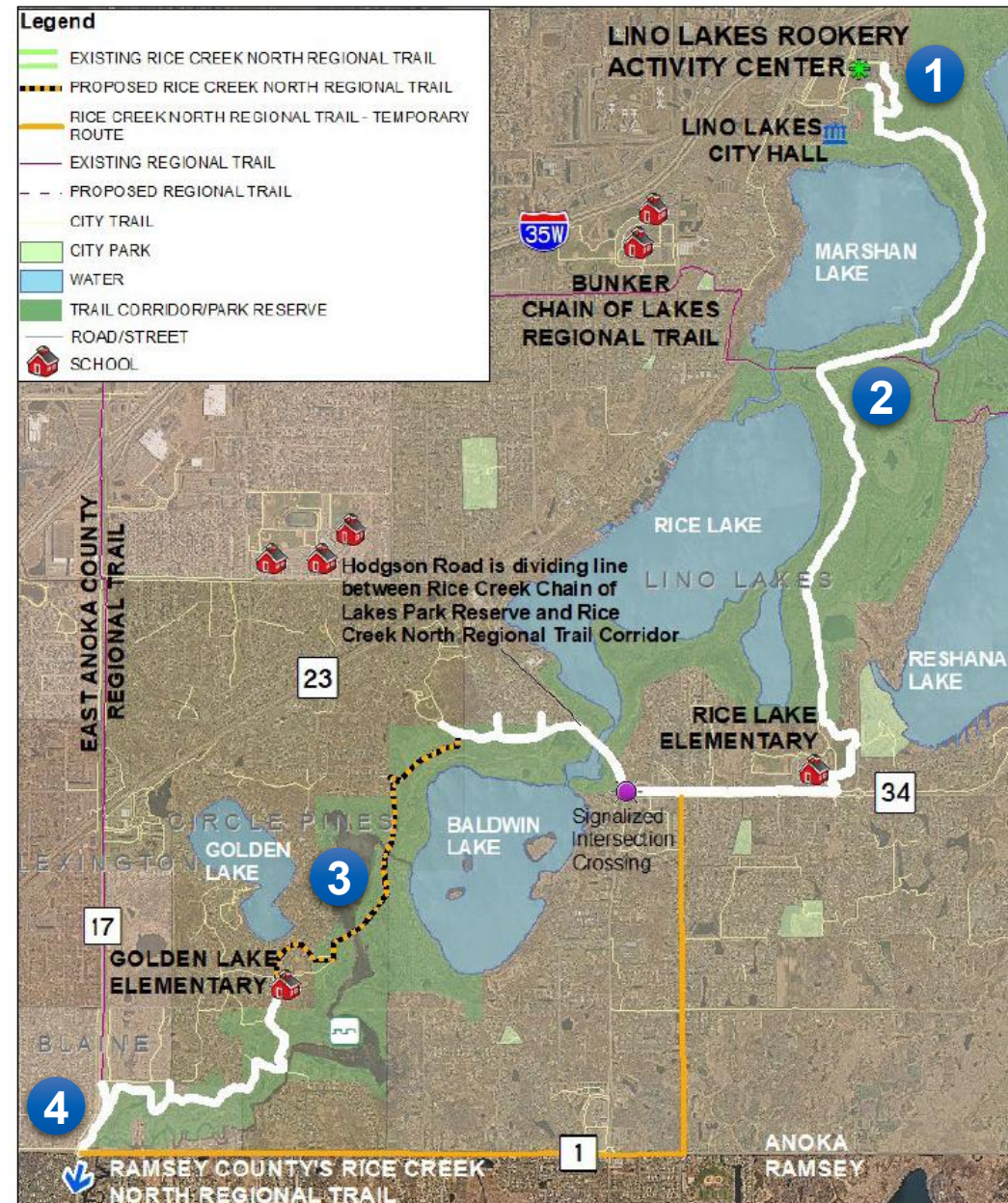
Partner Engagement

- Requested feedback on plan from the City of Circle Pines, City of Lino Lakes, and the Rice Creek Watershed District
- Themes included:
 - Desire for trail to run on school land (revealed that this is not possible due to archaeological remains)
 - Approval of the work done and the trail project moving forward

Boundaries

Eight mile north-south trail

- 1 Alignment starts from the north at the **Lino Lakes Rookery Activity Center**.
- 2 Alignment continues southwest through **Rice Creek Chain of Lakes Park Reserve**, connecting to **Bunker Hills-Chain of Lake Regional Trail**.
- 3 Newly-planned segment travels southwest along Baldwin Lake before becoming a short 1000' on-street segment on **Golden Lake Rd**.
- 4 Alignment continues south and connects with **East Anoka County Regional Trail** and Ramsey County's portion of **Rice Creek North Regional Trail**.



Development Concept

- Connects to three regional trails, through a regional park reserve, and to several schools and activity centers
- Primarily 10-foot wide (eight feet in constrained areas), hard surface multi-use trail.
- Trail plan identifies widening some existing segments from eight feet to 10 feet.
- New one-mile segment will include a mainly off-road trail with 1000' on a residential road with curb and vegetation separation.
- Boardwalks and two pedestrian bridges will be added as part of the new segment



Estimated Costs



Total Development Costs

The total estimated cost for design and construction of the remaining one-mile segment of Rice Creek North Regional Trail is **\$7.7 million**.

Acquisition

No parcels needed for acquisition, therefore **no acquisition costs**.

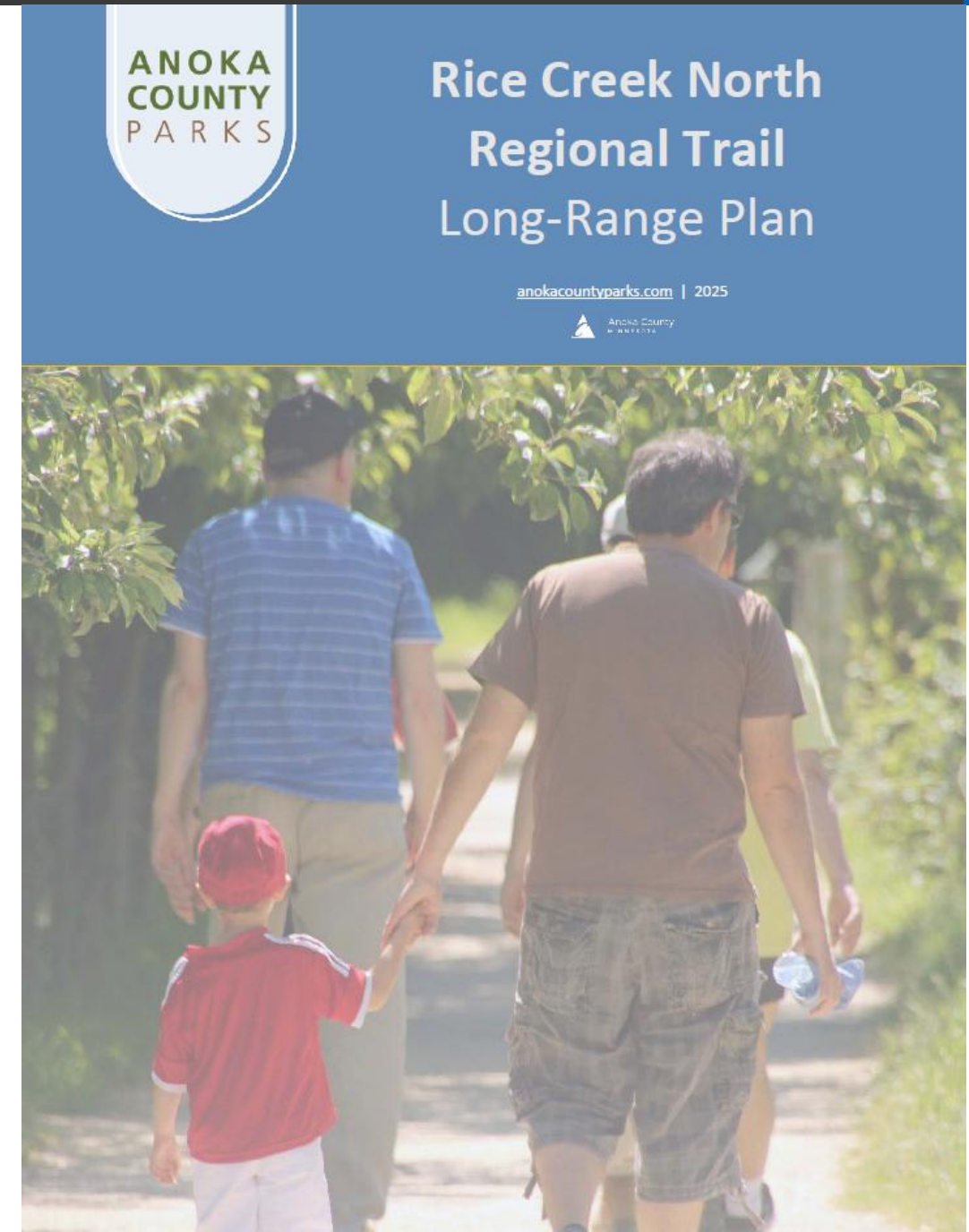
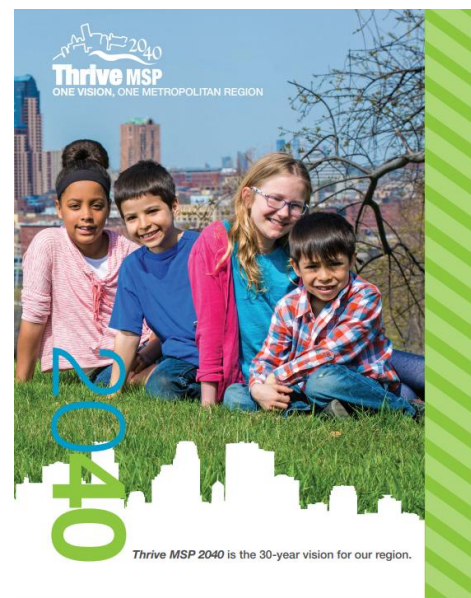
Operations

The estimated annual operating cost is approximately **\$20,000**.

Rationale for Proposed Action

The Rice Creek North Regional Trail Long-Range Plan is consistent with the requirements of the:

- *2040 Regional Parks Policy Plan*
 - Chapter 5, Strategy 1
- Other Council policies



Proposed Action

That the Metropolitan Council:

1. Approve the Rice Creek North Regional Trail Long-Range Plan





Zoey Mauck

Senior Planner, Community Development

zoey.mauck@metc.state.mn.us

