

Equity Advisory Committee

January 20, 2026



BROOKLYN PARK | CRYSTAL | ROBBINSDALE | MINNEAPOLIS



Today's Topics

- Project Overview
- Design Update
- Environmental Update (ROW and Cultural Placekeeping)
- Anti-Displacement
- Engagement Update
- Q&A

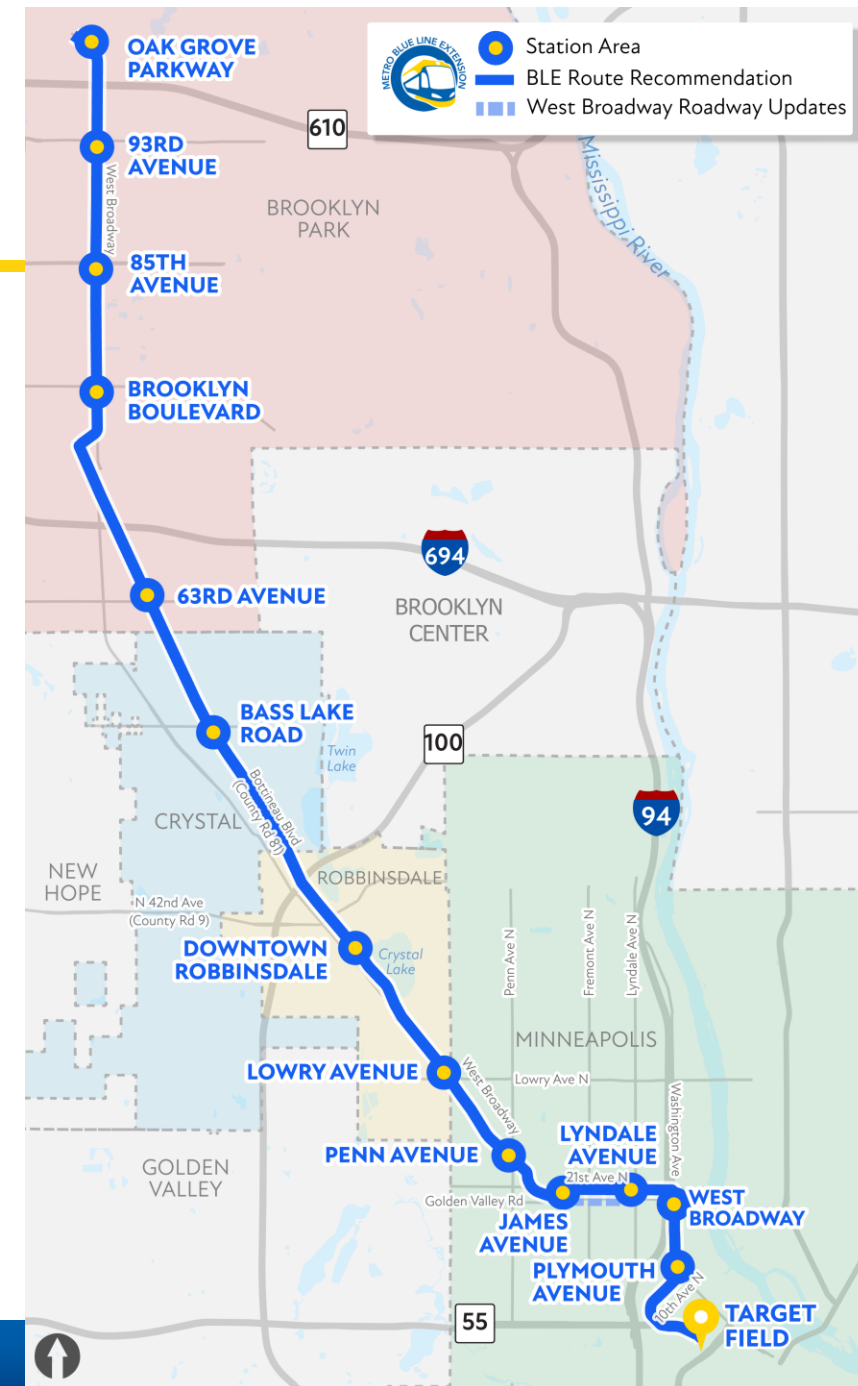


Project Overview



Project Overview

- 13.4 miles & 13 new stations connecting Minneapolis, Robbinsdale, Crystal, Brooklyn Park and surrounding communities to fast, frequent, all-day service across the METRO system
- Single seat ride to existing Blue Line stops downtown, MSP Airport, and Mall of America
- Focus on building community prosperity through anti-displacement strategies before, during, and after construction
- Robust community engagement
- 60% design completion July 2025
- Amended Record of Decision signed August 2025 – concludes environmental review process



Timeline to Construction

	2025	2026	2027
Environmental (mitigation, Section 106)	SFEIS/AROD ◆ Implementation & Monitoring		
Design Progression	Design Advances ◆		
Full Funding Grant Agreement	Securing Federal Funding ◆		
Construction Starts			Contract RFP ◆
Anti-Displacement	Continues Through Design Advancement		
Public Engagement	Consult and Involve		

◆ SFEIS/AROD Completed

◆ Design Completed

◆ Federal Funding Secured

◆ Construction Activity Started

All schedules are subject to change.



Design Update



60% Design Level Plans Complete

- Design release timeline:
 - Crystal: May 2025
 - Brooklyn Park: June 2025
 - Robbinsdale: July 2025
 - Minneapolis: September 2025
 - Lowry Avenue Station: October 2025
- Design plans can be found on:

BlueLineExt.org



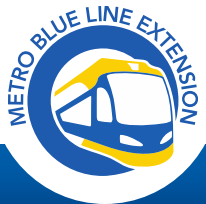
Minneapolis Design Workshop - 2025

Community Shaped Design

- Prioritize minimizing property impacts in design
- Route decisions
 - Choice of West Broadway corridor in North Minneapolis
 - Move from Lyndale Avenue to east of I-94
 - Moving tracks off West Broadway to 21st Avenue between I-94 and James Avenue while improving West Broadway

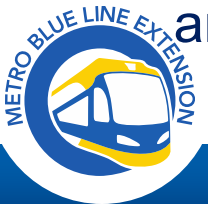


Route Identification Map - 2021



Community Shaped Design

- Connectivity and safety
 - Trail connections and pedestrian safety improvements
 - Traffic calming and roadway improvements
 - New connection across I-94 at 21st Avenue
 - Improved roadway connectivity in North Loop
 - Addition of MTPD substation at Robbinsdale Park and Ride
 - Added "fourth leg" at West Broadway and Hwy 610



Community Shaped Design

- Station locations and Design
 - Redesign of Lowry Avenue station
 - Addition of Station at Washington and West Broadway
 - Relocation of Downtown Robbinsdale station
 - Addition of Bass Lake Road overpass at station in Crystal



Right-of-Way Process



Acquisitions and Relocations

- Need to acquire 35 homes or buildings where a tenant must be relocated
 - 18 Commercial Properties
 - 14 Residential Properties
 - 2 Institutional Properties
 - 1 Undeveloped Property



Right-of-Way Process

- The process by which the project acquires property for the construction and operation of the Blue Line Extension will begin soon
- Types of acquisitions:
 - Full – purchase the whole parcel of land from property owner
 - Partial – purchase part of a parcel of land from property owner, which includes permanent and temporary easements
- What to Expect:
 - Field visits with impacted property owners
 - Appraisals
 - Offer and negotiations



ROW Process Resources

- [Blue Line Extension SFEIS Section 4.3: Displacement of Residents and Businesses](#)



- [Real Estate Acquisition](#)



- [Relocation Assistance](#)

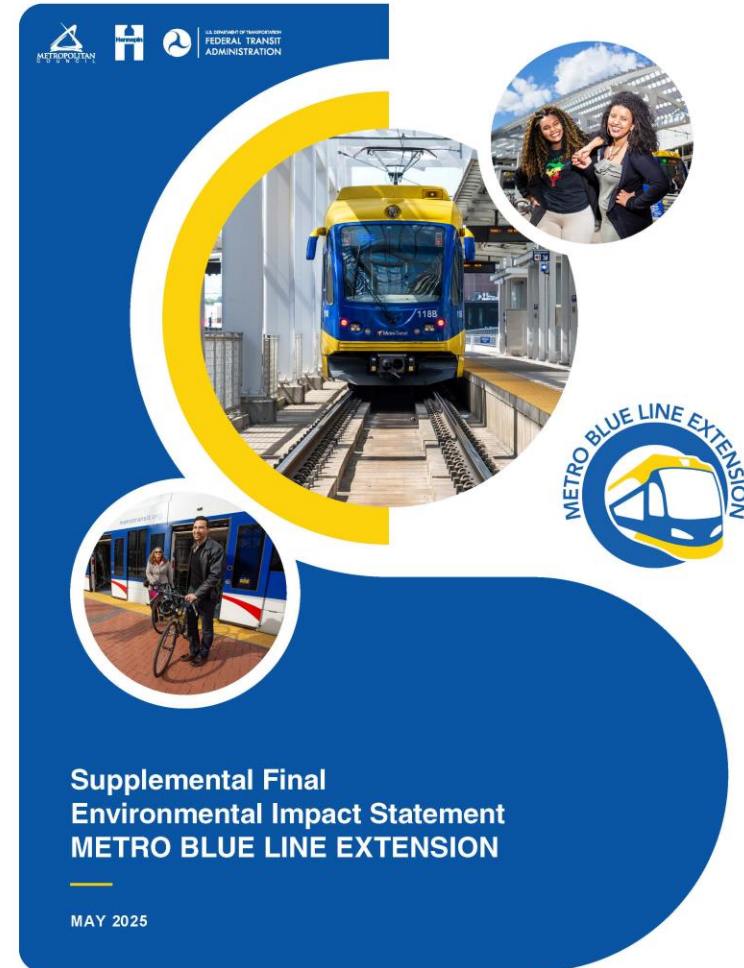


Environmental Update



Environmental Review Milestones

- Supplemental Final EIS published May 2025
 - Identifies final impacts and mitigation
 - 30-day comment period
 - Comments responded to in Amended Record of Decision
- In August, the FTA published an Amended Record of Decision (AROD) concluding the federal environmental review process



Next Steps

- SFEIS mitigation strategies officially part of BLE project
- \$5M Business Support Program
- \$5M Community Investment Fund
- Implementation after Full Funding Grant Agreement



Strategies to Address Impacts

- Mitigation within the Project is funded by the Project
- FTA approval via Amended Record of Decision
- Mitigation implementation after funding received
 - Continuing to define mitigation implementation through outreach with Project partners



Strategies to Address Impacts

- Mitigation strategies identified in Amended ROD:
 - Funding for community programs tied to housing stability
 - Cultural placekeeping design groups
 - Public realm improvements
 - Business support during construction
 - Storefront/virtual resource center
 - Workforce development
 - Parking near Penn/W Broadway



Community Investment Fund

- Invest in community organizations to strengthen community and offset construction impacts
- Funding will support community programs, address their needs, and strengthen community institutions
- Funding allocated based off effectiveness in offsetting impacts and ability to meet identified needs related to housing stability



Business Support During Construction

Construction support:

- Online hotline and updates
- Advance notice of access and utility disruptions
- Staff as liaisons for communication between businesses and contractors
- Public Informational Sessions

Business support:

- Business Support Fund
- Business advertising
- Provide wayfinding for customers



Business Support During Construction

Business Support Fund:

- Up to \$30k per business, \$5M total
- Intended for businesses next to construction activities
- Funds to offset rent or mortgage payments
- Criteria and application process under development
 - Distance/time duration requirements
 - Small business definition and other requirements



Online Portal and Storefronts

Website for affected people and businesses:

- Relocation and anti-displacement resources
- Information regarding construction related disruptions and closures
- Other available information and resources

Storefronts in Brooklyn Park and Minneapolis:

- Gather information from contractors and staff
- Find resources during construction
- Ask project related questions
- Meeting, open house, and event space

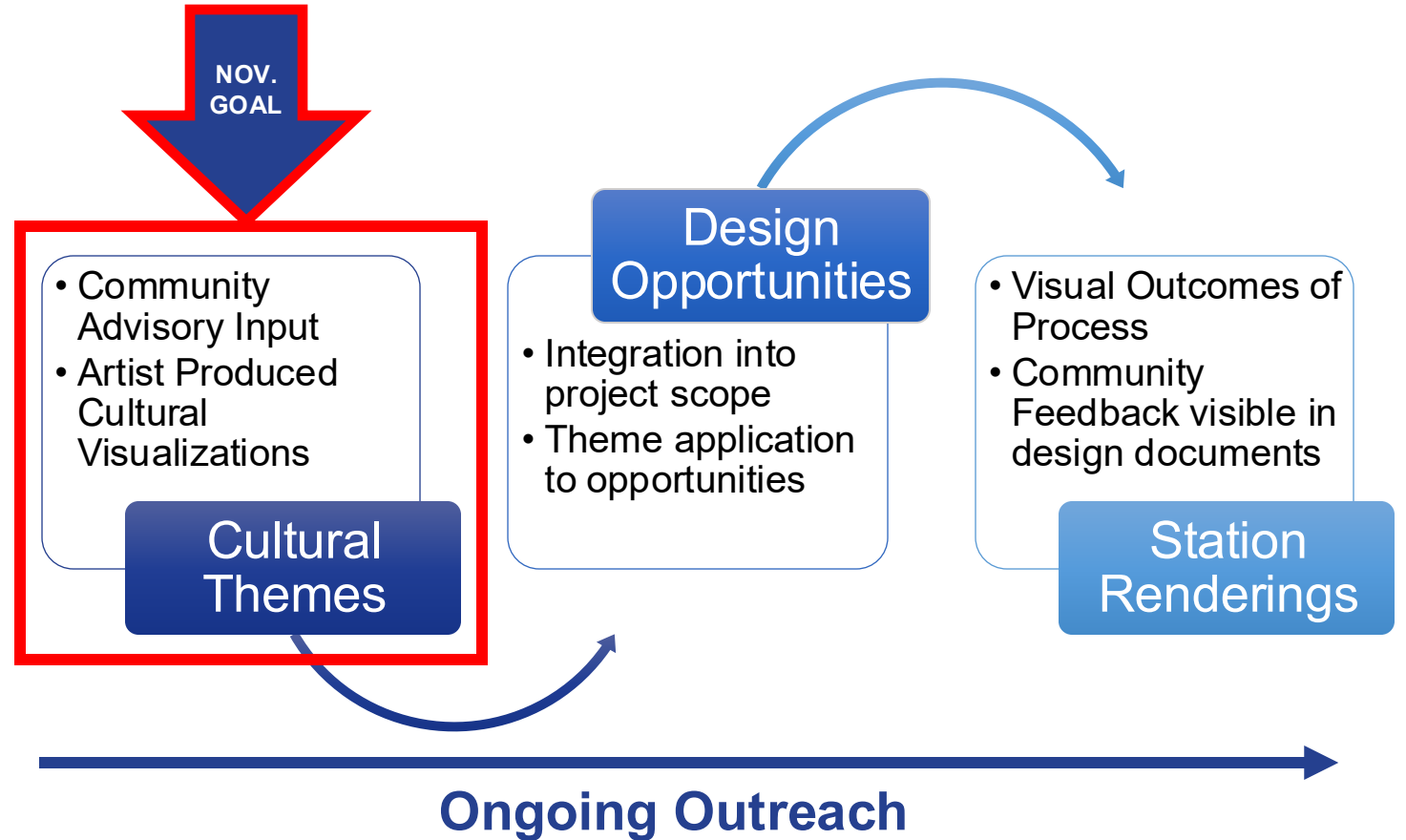


Cultural Placekeeping



Approach Overview

- Develop guiding themes per station with community group
- Further outreach based on initial themes developed by work group
- Work group complete in November 2025



Cultural Placekeeping Update

- Artists have developed draft themes to be presented Oct. 22nd
- On-platform opportunities were introduced at August meeting
- Off-platform opportunities in progress



Cultural Placekeeping Update

- BLE cultural placekeeping groups are looking for community members to share their ideas on how the BLE stations can reflect and honor the communities they serve
- engage.mendcollaborative.com/bluelineculturalplacekeeping



BLUE LINE CULTURAL PLACEKEEPING



CONTRIBUTE TO CULTURAL PLACEKEEPING ALONG THE BLUE LINE EXTENSION CORRIDOR!

Your voice can help shape a project that honors the people and places the future Blue Line serves.

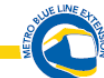
Share your experiences, ideas, and hopes for how culture, history, and community life can be supported and sustained in this area.

Learn more about the cultural placekeeping design groups and share your ideas by scanning this QR code:



Or visit our site:

<https://engage.mendcollaborative.com/bluelineculturalplacekeeping>



Anti-Displacement Community Prosperity Program Board Update



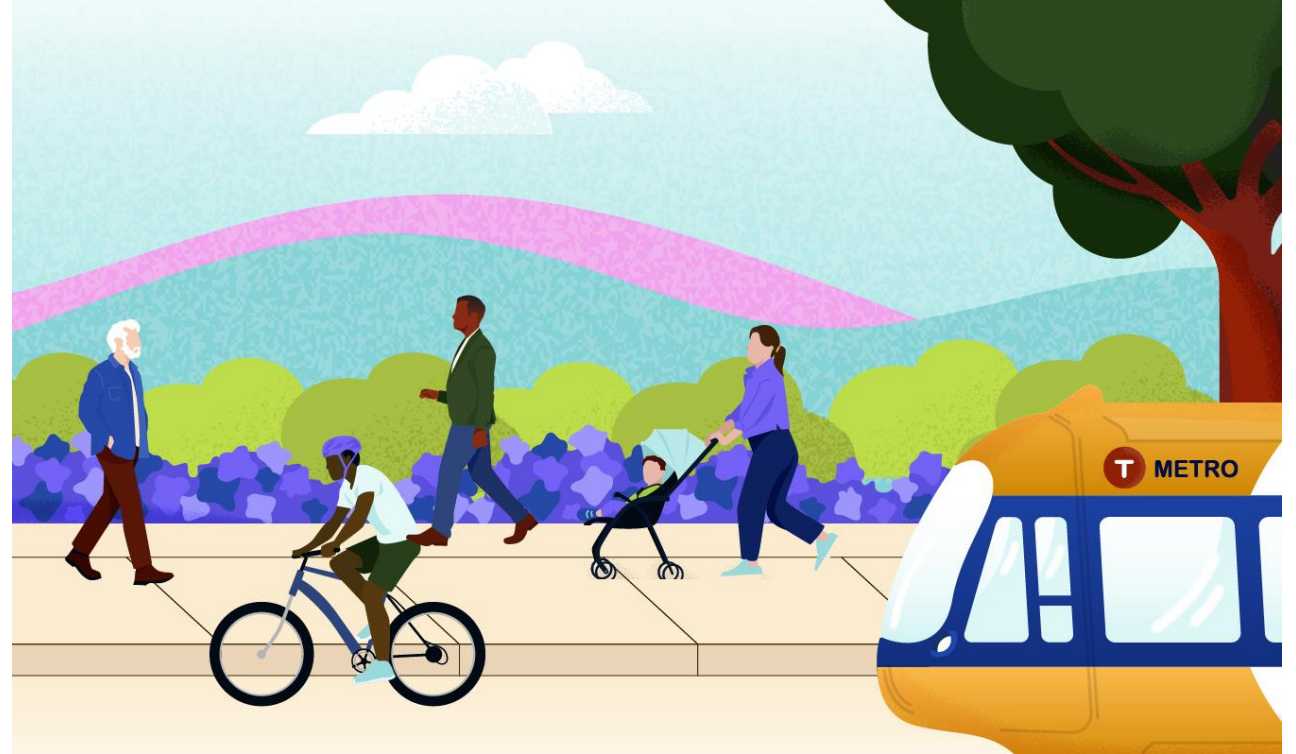
Anti-Displacement Community Prosperity Program (ACPP) update

January 20, 2026



Pilot project overview

The Anti-Displacement Community Prosperity Program (ACPP) Board launched a \$2 million funding phase this fall — a strategic approach to address anti-displacement along the Blue Line Extension Project Corridor, including pre-construction activities.



Timeline

\$10 million approved by the Minnesota Legislature for anti-displacement efforts.

**May
2024**

**June
2024**

ACPP Board convenes for first meeting.

ACPP Board approves \$2 million pilot project.

**August
2025**

**Oct. 31,
2025**

ACPP Board approves funding for organizations that submitted letter of interest for pilot.

ACPP Board will vote to approve contracts

**Dec. 19,
2025**



At a glance: funding awards

- \$2 million awarded to 13 contracts
- Categories:
 - Housing Stability
 - Business Stability
 - Real Estate Development
- Matching funds required



Housing Stability awards

Organization	Project overview	Focus area
African Career, Education and Resources Inc. (ACER)	Rental assistance, case management, community education, leadership development, and policy advocacy	BLE in Brooklyn Park and Crystal
Harrison Neighborhood Association	Rental assistance, down payment assistance, home improvement grants	Harrison neighborhood North Minneapolis
Heritage Park Neighborhood Association	Rental assistance, tenant rights education, homeownership workshops, financial counseling, community meetings and leadership trainings	Heritage Park neighborhood North Minneapolis

Note: Project overviews subject to change



Housing Stability awards

Organization	Project overview	Focus area
Housing in Action	Preserve 93 units of affordable rental housing across 25 buildings through repairs and safety upgrades	North Minneapolis
Northside Resident Redevelopment Council (NRRC)	Forgivable mortgages, personal loans, forgivable home improvement loans	Near North and Willard Hay North Minneapolis

Note: Project overviews subject to change



Business Stability awards

Organization	Project overview	Focus area
African Career, Education and Resources Inc. (ACER)	Grants, technical assistance, training, policy engagement sessions, BIPOC business corridor tour, coordinated marketing campaign	BLE corridor in Brooklyn Center, Brooklyn Park, Crystal, Robbinsdale
Black Women's Wealth Alliance, SBC	Grants, loans, lease support, down payment assistance, career coaching, technical assistance	BLE corridor
Northside Economic Opportunity Network (NEON)	Forgivable loans, technical assistance	BLE corridor

Note: Project overviews subject to change



Real Estate Development awards

Organization	Project overview	Focus area
Amani Construction & Development	Five new construction four-bedroom affordable townhomes	1901-11 Queen Avenue North North Minneapolis
Brown & Dupay Properties	Titan Tower, seven-story new construction mixed-use building, including 18 rental units	2034 West Broadway Avenue, North Minneapolis
Kirk's Café	Renovate vacant building into cultural café that will include youth internships, small business support, artist residencies, and community forums	1830 Glenwood Avenue North Minneapolis

Note: Project overviews subject to change



Real Estate Development awards

Organization	Project overview	Focus area
Riverfront Development Partners	The Resolute, 14,000 square-foot mixed use building, including four condos	1300 West Broadway Avenue, North Minneapolis
The Land Bank Twin Cities	Prepare site for construction of The Resolute	1300 West Broadway Avenue, North Minneapolis

Note: Project overviews subject to change



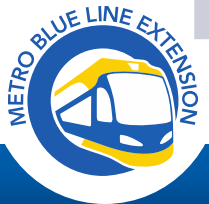
CURA Metrics



CURA Recommendations for Displacement

- Short- and long-term displacement monitoring systems

Tool	Function
Community Reporting Portal	Online platform where community members can share experiences, concerns and information related to displacement
Displacement Dashboard	Quarterly updated tool that reports indicators of displacement risk, identifying and tracking trends
Annual Displacement Tracker	Yearly report of long-term demographic shifts, housing affordability outcomes, and displacement dynamics



Community Reporting Portal Metrics

Metric	Category	Source	Recommendation
Business accessibility during construction	Commercial	Business Owners	Strongly recommended
Business access to support	Commercial	Business Owners	Strongly recommended
Home accessibility during construction	Residential	Homeowners	Recommended



Anti-displacement Update



Met Council's Anti-displacement Framework

- The objective of the anti-displacement framework is to enhance residents' ability to keep their housing, amenities, health, and sense of belonging in a neighborhood. The Met Council has identified three strategies to implement this framework.
 - Met Council investments go through an anti-displacement risk assessment.
 - Prioritize projects that support community connection and anti-displacement in our grant systems.
 - Provide best practices and resources through engagement and collaboration with overburdened communities.



Metropolitan Council Resources

Livable Communities Act (LCA) grants: awarded to participating cities in the 7-county metro region that are partnering with development teams on projects.

Key Program Features:

- Through nine different grant programs, LCA grants help communities achieve development goals that create more housing choice, support living wage job creation, and connect jobs, housing, and regional amenities to create a more equitable region.
- To be eligible to apply for Livable Communities grants, cities must enroll in the program. All BLE cities are currently enrolled and eligible for these grants.
- Each grant has their own deadlines and funding limits.
- More information: metro council.org/Communities/Services/Livable-Communities-Grants



Metropolitan Council Resources

- **Livable Communities Demonstration Account:** supports development and redevelopment projects
- **Transit Oriented Development Grants:** focused on high density projects along transit corridors
- **Pre-Development Grants:** teams defining or redefining a project that support Imagine 2050 goals
- **Policy Development Funds:** support development that emphasizes equitable development
- **Tax Base Revitalization Account:** cleans up contaminated land/buildings for development
- **Local Housing Incentives Account:** helps expand and preserve lifecycle and affordable rental housing
- **Affordable Homeownership Program:** provides grants to support affordable homeownership development, including acquisition and rehabilitation



Increase Community Wealth Building

- Review of contracting and procurement processes to reduce payment time
- Coordinate workforce training with contractors and trade unions
- Support community place-keeping and place-making
- Convene private, public, non-profit and philanthropic interests
- Share data and resources



Workforce Development Update



Blue Line Extension Workforce Development

BLUE LINE EXTENSION ANTI-DISPLACEMENT RECOMMENDATIONS

Prepared for Hennepin County
April 2023

 Center for Urban and
Regional Affairs | **cura**
UNIVERSITY OF MINNESOTA

Coordinated Action Plan for Anti-Displacement

Blue Line Extension Corridor

August 2024



Workforce Development Goals

Navigation & Outreach

- Connect people with services through community-based organizations

Employment & Training Support

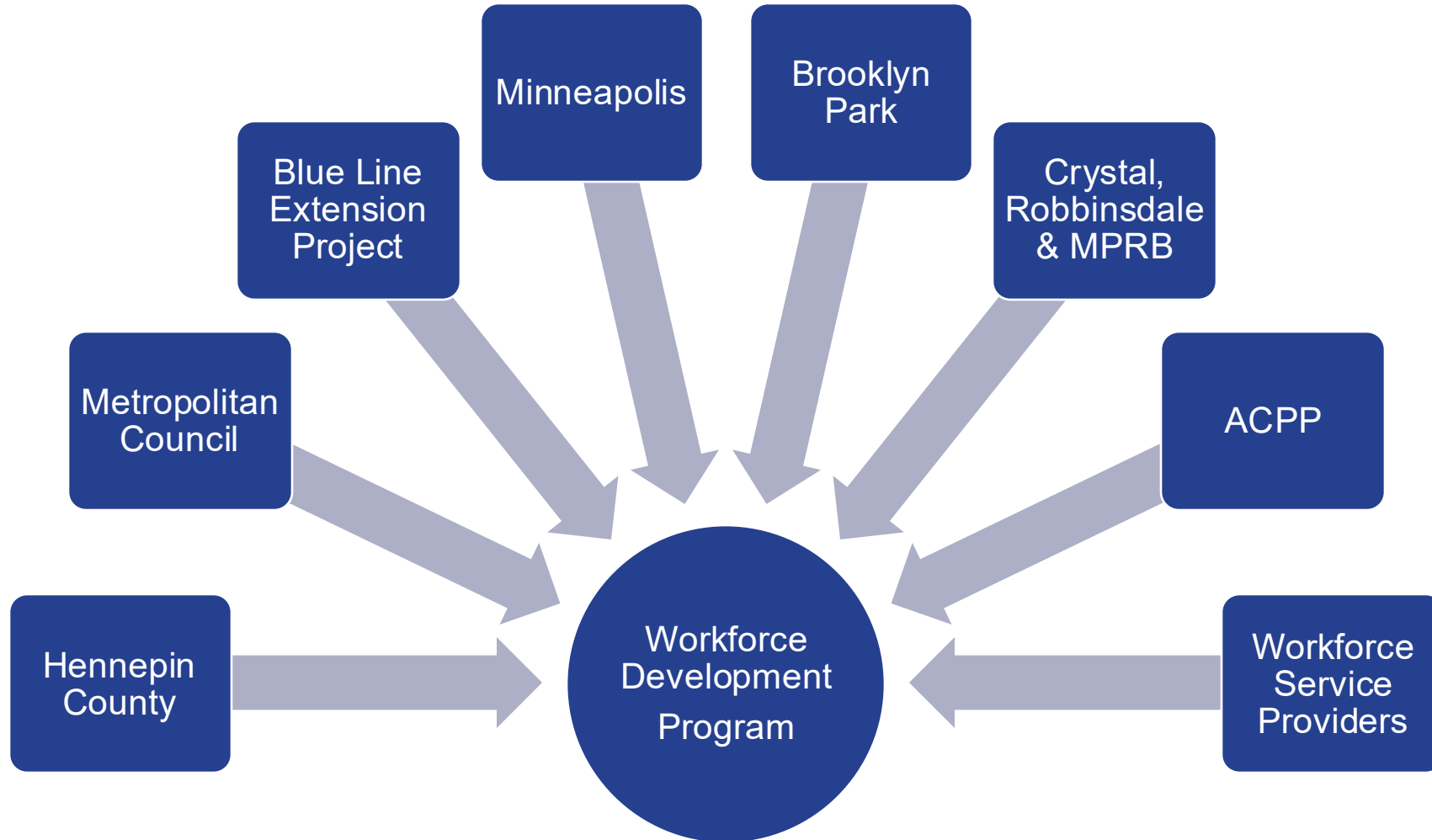
- Monitor employment trends, and community feedback to identify employment & training opportunities

BLE Jobs

- Create local hiring preference, prepare and connect corridor residents to BLE jobs



WFD Program Partnership

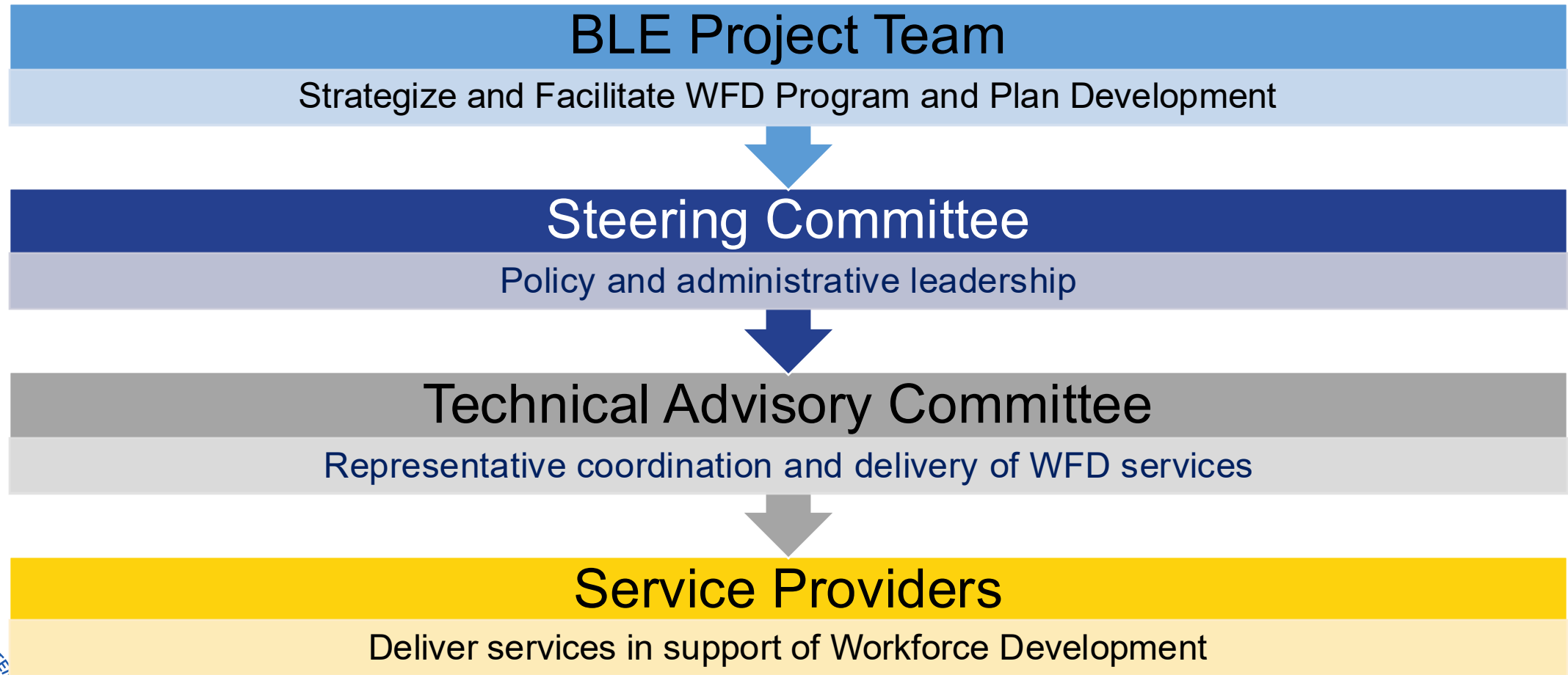


Project's Workforce Commitments

- Identified in the Supplemental Final Environmental Impact Statement (SFEIS), and approved by the Federal Transit Administration (FTA)
 - Implement a Project Workforce Development Program
 - Local hiring preference requirements in construction contracts
 - Potential workforce development opportunities (trainings, mentorships, apprenticeships, scholarships, career fairs, information sessions)
- Require Contractors to identify workforce approach in their proposals
- Small Business Goals



BLE Workforce Organization Structure



Current BLE WFD Status



Marketing & Communications Plan

Goals

Make training and job opportunities visible, clear, and relatable to target audiences.



Awareness

Inspire & Motivate
Show the transformational potential of BLE jobs/training



Trust

Build Trust & Transparency
Share updates consistently, openly, and in accessible formats



Enrollment

Connect Communities to Opportunity
Provide pathways from outreach to training to employment



Engagement Update



Engagement Purpose

- Foster meaningful and transparent communication with communities' impacted by the proposed transit extension
- Ensure that all stakeholders and community members are informed, involved, and engaged
- Gather valuable feedback, address concerns, and build consensus around the project



Engagement Topics - 2026

- Environmental mitigation
- Advanced design
- Right of Way (ROW) process
- Construction Preparedness
- General project information
- Station area planning



Engagement Activities - 2026

- Cultural placekeeping and station design development
- Quarterly meetings/open houses for general project updates
- Advance design coordination with key property owners
- Business outreach
 - Following up with directly impacted properties
 - Mitigation programs



Engagement Metrics: Aug 2020-Jan 2025

- **958** events resulting in nearly **46,100** points of contact with the public
- **465,500+** reach on social media and **10 million+** reach through newsletters and paid ads on community and cultural media (as of June 2025)
- Approximately **7,400** survey responses, written comments, and comments on the interactive map
- Corridor postcards mailed to **+250,000** properties
- Over **40,000** emails and phone calls



Robbinsdale Open House, September 2025



DREAM Sessions in Each City

- **Completed 8 DREAM sessions in 2025**

- 2 each in Brooklyn Park, Crystal/Robbinsdale, Minneapolis and North Loop
- Brooklyn Park and North Minneapolis best attended
- Over 400 survey response captures

- Top concerns: safety/security, cost (who's going to pay for it)
- Top aspirations: entertainment districts, youth activities, increased regional connections and mobility, services for seniors and differently-abled, employment and business development opportunities



DREAM Youth Summit

Youth Summit at the Northside YMCA on August 9

- Engaged (~38) youth to share information about the project and gather feedback through art activities, bus tour, and podcast and video interviews



August 2025 DREAM Youth Summit



Regional DREAM Summit

Regional Summit at UROC on October 4

- Community members and policy makers recapped feedback from the DREAM sessions in each city and discussed next steps



Regional DREAM Summit

Topics included:

- Status of project and anti-displacement work
- Development potential around LRT in the Twin Cities
- Lessons learned from the Green Line
- Updates from city staff on station area planning and anti-displacement work
- Safety and security update



Approximately 60 in-person attendees & 160 virtual attendees



Upcoming Engagement Events

Event Name	Location	Day	Time
METRO Blue Line Extension Community and Business Working Group	Metro Transit North Loop Garage	Wed, Feb. 4	6-8pm
METRO Blue Line Extension Corridor Management Committee	Metro Transit Heywood	Thu, Feb. 12	1:30-3pm



Stay connected

- Engagement email:
 - BLEoutreach@metrotransit.org
- **BlueLineExt.org**
 - For the latest project updates and to sign up for our newsletter
 - Connect with staff for your questions or schedule a presentation
- Follow us:
 - Instagram: Blue_Line_Extension
 - BlueSky: @BlueLineExt.bsky.social
 - Facebook: MetroBlueLineExtension
 - X/Twitter: @BlueLineExt



A service of the Metropolitan Council
COUNCIL *Transit*
Improvement
BOARD