

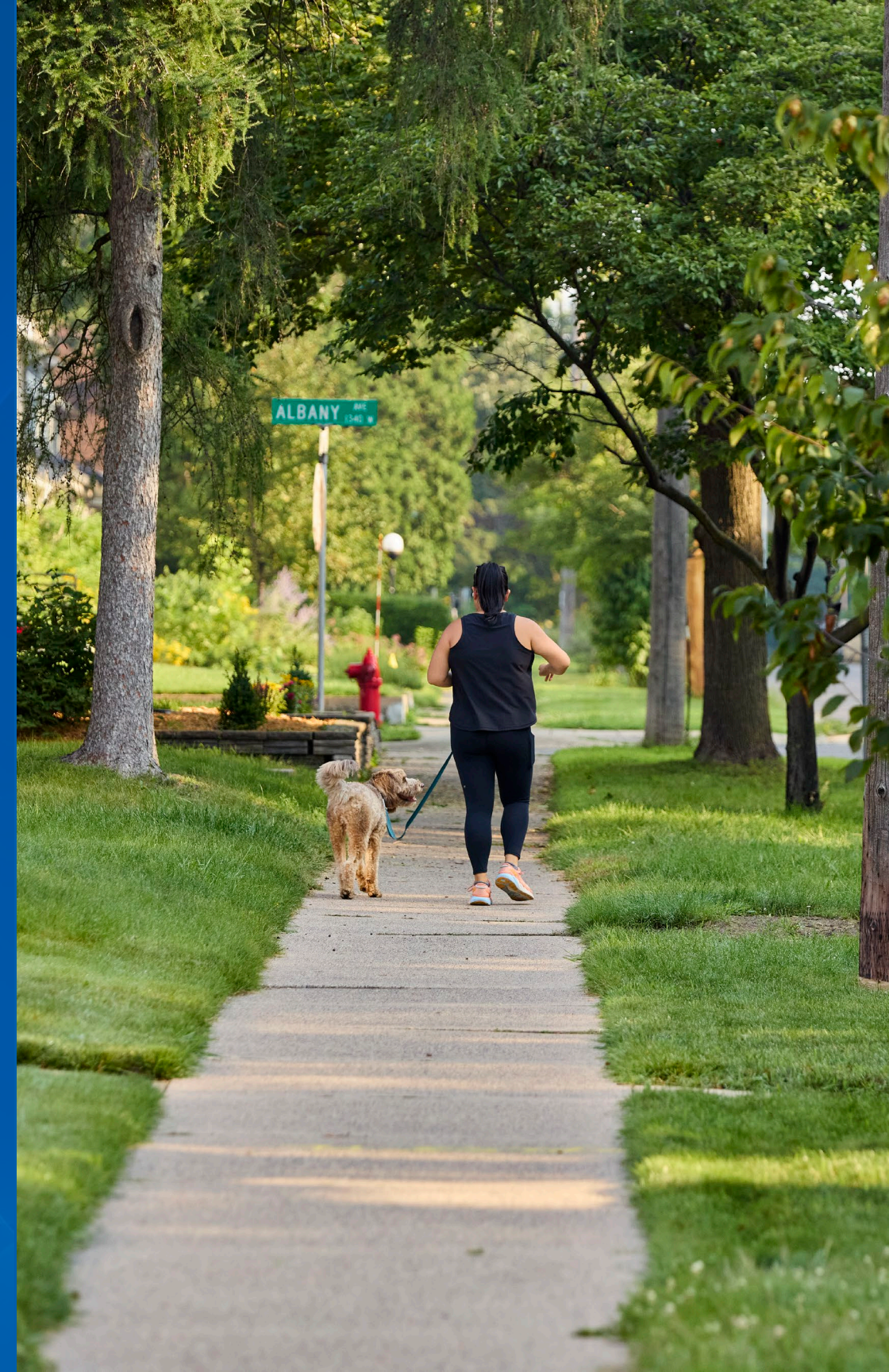


2026 Community Tree Planting Grants Notice of Funding Availability

Community Development Committee

Gillian Greenberg

June 15, 2026



Program Purpose



As set in MN Statute 473.355:


1. Removing and planting shade trees on public land to provide environmental benefits;
2. Replacing trees lost to forest pests, disease, or storms; and
3. Establishing a more diverse community forest better able to withstand disease and forest pests.

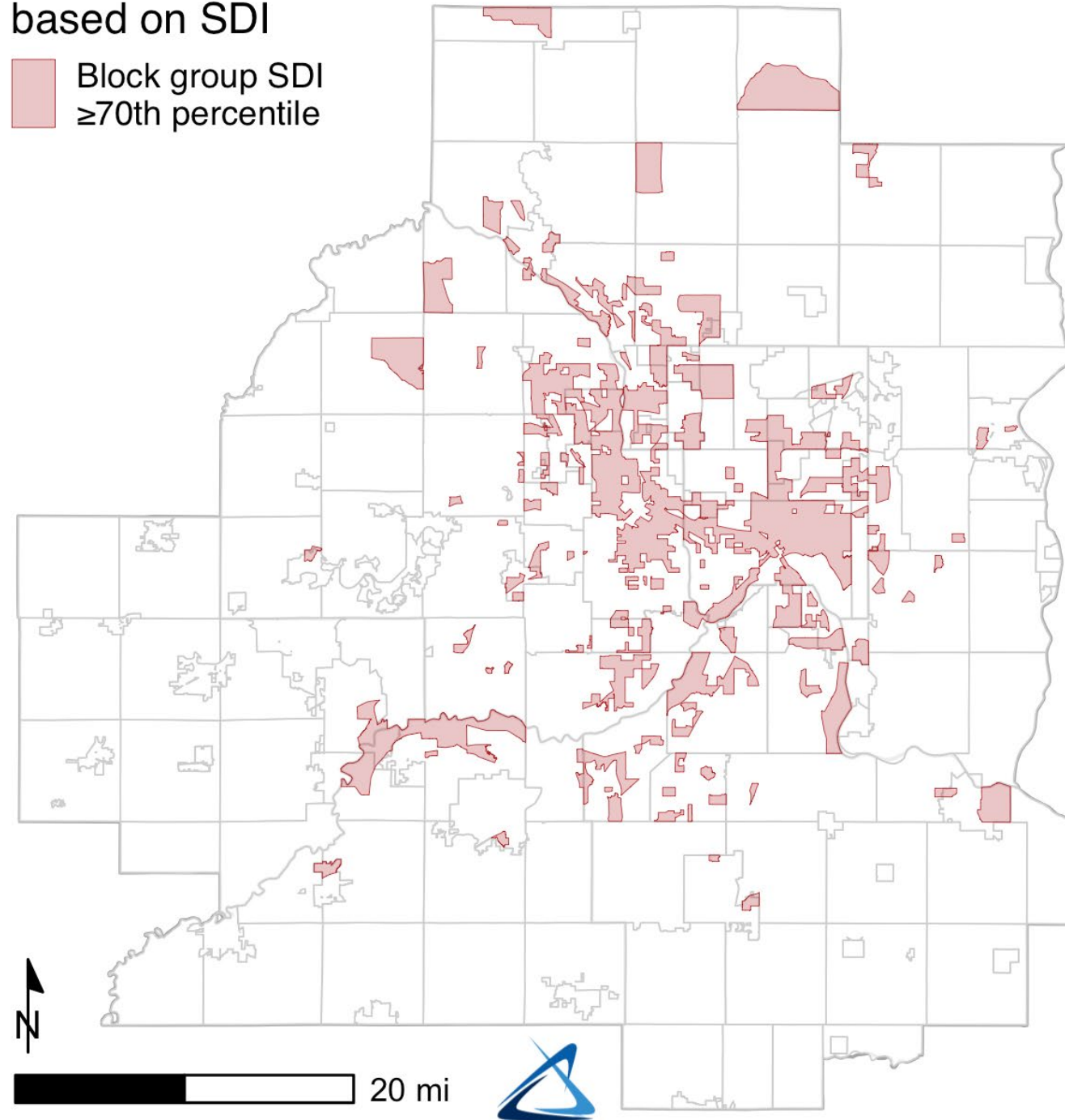
Supplemental Demographic Index

Program Priorities

1. Projects removing and replacing ash trees that pose significant public safety concerns; and
2. Projects located in a census block group with a supplemental demographic index score in the 70th percentile or higher within the state of Minnesota.*

Prioritization based on SDI

 Block group SDI ≥70th percentile



2026 Program Details

Funding Details

- \$3.4 million for 2026, from general funds and G.O. bonds, and \$3.5 million for 2027 from G.O. bonds.
- Bonding funds affect eligible expenses
 - Projects cannot include staff time, equipment purchases or establishment costs
- Project size: \$10,000 to \$500,000

Evaluation Approach

- Project Tiering Criteria to reflect nuance of project scope
- Evaluation Criteria to emphasis priorities and need

Proposed Project Tiering Update

Priority Points:	0	1	2	3
Ash Removals / Replacements	0 trees	1-15 trees	15-29 trees	30+ trees
Trees Planted in Priority Areas out of Total Trees Planted	0 – 24%	25 - 49%	50 - 74%	75 – 100%

Priority Points	Review Tier
5 – 6	Tier 1
3 – 4	Tier 2
0 – 2	Tier 3

Proposed Evaluation Criteria Update

Criteria	Potential Points
Project Management	35
Tree Canopy Health and Resilience	25
Project Serves Vulnerable Communities	25
Project Addresses Climate Change Impacts	15

Evaluation Criteria: Project Management

Project Management	35	0 – 15	Application demonstrates project impact and community need for grant funding
		0 – 10	Application demonstrates expertise and capacity to achieve the desired outcomes
		0 – 10	Application demonstrates thoughtful planning to communicate with residents throughout project timeline

Evaluation Criteria: Tree Canopy

Tree Canopy Health and Resilience	25	0 – 10	Application describes if and how the project will address ash trees posing public safety concerns
		0 – 10	Application describes an effective maintenance plan to ensure healthy tree establishment beyond grant funded activities
		0 – 5	Application describes how the project will improve tree canopy health and resilience, and/or improve tree species diversity

Evaluation Criteria: Vulnerable Communities

Project serves vulnerable communities	25	0 –15	Application describes how project location(s) are targeted to serve vulnerable communities
		0 –10	Application demonstrates clear and tangible impacts for vulnerable communities

Evaluation Criteria: Climate Impacts

Project addresses climate change impacts	15	0 –10	Application describes how Project location(s) are targeted to address climate change impacts including but not limited to extreme heat and localized flooding
		0 –5	Application demonstrates clear and tangible impacts for residents living in areas experiencing-disproportionate climate change impacts

2026 Program Timeline

June – July 2026

- CDC and Council Approve Notice of Funding Availability

Sept. – Oct. 2026

- Application period

Nov. 2026

- Internal application review for eligibility and completeness
- Panel review for criteria scoring and recommendations

Late 2026 – Early
2027

- Council reviews and approves award recommendations

Q1 2027

- Grant agreements executed

Council Action



- Authorize fund distribution for the Community Tree Planting Program in two rounds, one each in 2026 and 2027.
- Authorize the attached Notice of Funding Availability for the 2026 Community Tree Planting Grant Program, to be issued after the Council formerly amends its budget to bring in new state appropriation funding.



Thank you

Gillian Greenberg

Senior Climate Planner, Community Development
Gillian.Greenberg@metc.state.mn.us

